



LG Hausys HEADQUARTER One IFC 10 Gukjegeumyung-ro, Yeouido-Dong, Yeongdeungpo-Gu, Seoul, 150-876, Korea Tel +82-2-6930-0965 Fax +82-2-6930-0901

GLOBAL NETWORK

LG Hausys America, Inc. - ATLANTA
900 Circle 75 Pkwy Suite#1500, Atlanta, USA. GA 30339
TEL : 1-678-535-4117

LG Hausys Trading Co. Ltd. - SHANGHAI
19F Magnolia Plaza No.777 Hongqiao Road, Xuhui District, Shanghai,
China, 200030
TEL : 86-21-5241-6600

LG Hausys Europe GMBH - FRANKFURT
Lyoner str. 15, Atricom C6, D/60528 Frankfurt am main, Germany
TEL : 49-69-5830-29420

LG Hausys Russia, LLC. - MOSCOW
Lesnaya Plaza, 8th Floor, 4, 4th Lesnoy Pereulok, Moscow, 125047, Russia
TEL : 7-495-663-3958

LG Hausys India Private Ltd. - GURGAON
Plot #11 Sector 44 Gurgaon Haryana - 122001, India
TEL : 91-124-421-2590

LG Hausys, Ltd. TAIPEI OFFICE - TAIPEI
2F, NO. 89, Sec. 2, Tiding Ave., Taipei 11493, Taiwan
TEL : 886-2-2658-6370

<http://www.lghausys.com/eng/product/interior/decofoil/subindex.jsp>

INTERIOR FILM

INTERIOR FILM COLLECTION

2017
-
2018



interior film



www.lghausys.com

INTERIOR FILM

2017-2018 Collection



interior material

INDEX

플레인
HIGH GLOSS / SOLID

○ GM001	7	● RS93(ES93)*	10
○ GS001	7	● RS94(ES94)*	6
○ GS002	7	● RS95(ES95)*	6
● GS006	7	● RS96(ES96)*	6
● HS002	9	● RS97(ES97)*	6
● RB08(ESB08)*	11	○ RS98(ES98)*	6
● RE03(ESE03)*	11	○ RS99(ES99)*	6
○ RS13(ES13)*	10	● RS100(ES100)*	10
● RS21(ES21)*	10	○ RS101(ES101)*	6
● RS22(ES22)*	9	● RS102(ES102)*	7
● RS27(ES27)*	11	● RS103(ES103)*	6
● RS31(ES31)*	11	○ RS106(ES106)*	6
● RS35(ES35)*	9	○ RS107(ES107)*	6
● RS40(ES40)*	10	● RS108(ES108)*	7
● RS45(ES45)*	10	● RS109(ES109)*	6
● RS46(ES46)*	10	○ RS110(ES110)*	6
● RS47(ES47)*	10	● RS111(ES111)*	6
● RS48(ES48)*	10	○ RS112(ES112)*	6
○ RS49(ES49)*	10	● RS113(ES113)*	6
● RS51(ES51)*	9	● RS114(ES114)*	7
● RS52(ES52)*	9	○ RS115(ES115)*	6
● RS55(ES55)*	9	○ RS118(ES118)*	9
● RS56(ES56)*	9	○ RS119(ES119)*	9
○ RS57(ES57)*	9	● RS120(ES120)*	11
● RS58(ES58)*	11	● RS121(ES121)*	9
● RS61(ES61)*	11	● RS122(ES122)*	9
● RS62(ES62)*	11	● RS123(ES123)*	10
● RS68(ES68)*	10	○ RS124(ES124)*	9
○ RS69(ES69)*	10	● RS125(ES125)*	9
○ RS70(ES70)*	10	● RS126(ES126)*	11
○ RS71(ES71)*	9	● RS127(ES127)*	11
● RS76(ES76)*	10	● RS128(ES128)*	11
● RS80(ES80)*	10	○ RS130(HS001)*	9
● RS81(ES81)*	10	○ RSCJ1(ESCJ1)*	10
● RS82(ES82)*	11	● RSCK1(ESCK1)*	10
● RS83(ES83)*	11	○ RSH01(ESH01)*	7
● RS84(ES84)*	11	○ RSH02(ESH02)*	7
○ RS85(ES85)*	11	● RSH03(ESH03)*	7
○ RS86(ES86)*	9	● RSH04(ESH04)*	7
● RS87(ES87)*	11	● RSH05(ESH05)*	7
● RS88(ES88)*	11	○ RSJD1(HSJD1)*	6
● RS89(ES89)*	11	● RSJD2(HSJD2)*	7
● RS90(ES90)*	10	○ RSP01(ESP01)*	6
● RS91(ES91)*	9	● RSP02(ESP02)*	7
● RS92(ES92)*	10		

INDEX

플레인
METAL

ME11	13
MP001	12
MP002	12
MP003	12
MP004	12
MP005	12
MP006	12
MS01	13
MS09	13
MS18	13
MS19	13
MS20	13
MS21	13
RP03	13
RP04	13
RP06	13
RP07	13
RP08	13
RP42	13
RP45	13
RP46	13
RP47	13
RP48	13
RP49	13
RP50	13
RP51	13
RP58	12
RP59	12

리얼
REAL

RLT01	4
RLT02	4
RLT03	4
RLT04	4
RLT05	4
RLT06	4
RVE03	5
RVE04	5
RVE05	5
RVE06	5
RVE07	5
RWD01	2

클래식 우드
CLASSIC WOOD

PW001	16
PW002	17
PW003	17
PW004	16
PW005	16
PW006	16
PW007	16
PW008	17
PW009	16
PW010	16
PW011	16
PW012	17

프리미엄 우드
PREMIUM WOOD

NW006	25
NW007	25
NW008	25
NW011	20
NW012	22
NW014	20
NW015	24
NW016	22
NW017	24
NW025	18
NW026	19
NW031	25
NW032	19
NW033	20
NW034	22
NW037	27
NW038	21
NW039	23
NW040	26
NW041	19
NW042	20
NW043	22
NW044	20
NW045	26

NW046	26
NW053	18
NW054	26
NW055	27
NW056	25
NW057	21
NW058	26
NW059	23
NW060	26
NW062	19
NW063	26
NW067	26
NW068	25
NW070	23
NW071	21
NW072	23
NW073	19
NW074	23
NW076	18
NW078	21
NW079	27
NW080	18
NW081	26
NW082	19
NW083	20
NW084	25
NW085	25
NW086	20
NW087	26
NW088	20
NW089	23
NW090	27
NW092	20
NW094	24
NW095	24
NW096	25
NW097	24
NW098	24
NW099	19
NW100	20
NW101	25

우드
WOOD

CW001(EW001)*	32
CW044(EW044)*	43

CW046(EW046)*	42
CW057(EW057)*	41
CW069(EW069)*	43
CW079(EW079)*	36
CW087(EW087)*	44
CW088(EW088)*	45
CW090(EW090)*	37
CW111(EW111)*	42
CW124(EW124)*	41
CW130(EW130)*	41
CW141(EW141)*	33
CW142(EW142)*	33
CW150(EW150)*	42
CW151(EW151)*	33
CW152(EW152)*	45
CW153(EW153)*	43
CW154(EW154)*	36
CW155(EW155)*	45
CW175(EW175)*	35
CW177(EW177)*	42
CW211(EW211)*	40
CW240(EW240)*	30
CW258(EW258)*	36
CW292(EW292)*	38
CW314(EW314)*	36
CW316(EW316)*	44
CW320(EW320)*	39
CW321(EW321)*	44
CW330(EW330)*	45
CW348(EW348)*	44
CW349(EW349)*	42
CW351(EW351)*	43
CW356(EW356)*	44
CW358(EW358)*	34
CW359(EW359)*	40
CW362(EW362)*	44
CW364(EW364)*	44
CW370(EW370)*	39
CW383(EW383)*	29
CW384(EW384)*	39
CW390(EW390)*	30
CW404(EW404)*	43
CW407(EW407)*	38
CW408(EW408)*	43
CW424(EW424)*	29
CW427(EW427)*	37
CW431(EW431)*	38

CW432(EW432)*	42
CW437(EW437)*	29
CW438(EW438)*	33
CW439(EW439)*	41
CW441(EW441)*	35
CW442(EW442)*	40
CW452(EW452)*	39
CW453(EW453)*	33
CW454(EW454)*	40
CW455(EW455)*	37
CW459(EW459)*	37
CW460(EW460)*	38
CW466(EW466)*	44
CW469(EW469)*	39
CW506(EW506)*	32
CW509(EW509)*	32
CW510(EW510)*	37
CW511(EW511)*	29
CW512(EW512)*	36
CW513(EW513)*	42
CW516(EW516)*	30
CW518(EW518)*	33
CW519(EW519)*	34
CW521(EW521)*	30
CW523(EW523)*	30
CW527(EW527)*	32
CW529(EW529)*	41
CW530(EW530)*	29
CW531(EW531)*	33
CW533(EW533)*	33
CW534(EW534)*	36
CW535(EW535)*	40
CW537(EW537)*	32
CW544(EW544)*	30
CW551(EW551)*	42
CW552(EW552)*	29
CW553(EW553)*	30
CW554(EW554)*	39
CW555(EW555)*	38
CW556(EW556)*	37
CW557(EW557)*	34
CW567(EW567)*	29
CW569(EW569)*	32
CW575(EW575)*	29
CW579(EW579)*	39
CW581(EW581)*	39
CW582(EW582)*	39

CW588(EW588)*	37
CW590(EW590)*	32
CW597(EW597)*	31
CW598(EW598)*	34
CW599(EW599)*	34
CW600(EW600)*	30
CW601(EW601)*	38
CW602(EW602)*	34
CW603(EW603)*	32
CW604(EW604)*	32
CW605(EW605)*	35
CW606(EW606)*	31
CW607(EW607)*	37
CW608(EW608)*	45
CW609(EW609)*	35
CW610(EW610)*	39
CW612(EW612)*	35
CW613(EW613)*	40
CW614(EW614)*	45
CW615(EW615)*	31
CW616(EW616)*	31
CW618(EW618)*	30
CW619(EW619)*	38
CW620(EW620)*	37
CW621(EW621)*	29
CW622(EW622)*	45
CW623(EW623)*	45
CW624(EW624)*	45
CWAC1(EWAC1)*	38
CWB1(EWB1)*	41
CWESA(EWESA)*	45
CWES3(EWES3)*	43
CWES8(EWES8)*	44
CWNH6(EWNH6)*	35
CWSH2(EWSH2)*	38
DW156(EW156)*	36
DW157(EW157)*	36
DW159(EW159)*	35
DW161(EW161)*	30
DW179(EW179)*	40
DW180(EW180)*	40
DW181(EW181)*	41
DW182(EW182)*	32
DW190(EW190)*	43
DW195(EW195)*	41
DW207(EW207)*	33
DW264(EW264)*	41

EL052	15
EL053	15
EL055	15
EL091	55
EL092	55
EL139	56
EL140	56
EL176	47
EL177	47
EL178	47
EL194	55
EL197	55
EL199	55
EL209	55
EL213	49
EL215	49
EL225	54
EL226	54
EL227	54
EL234	14
EL235	14
EL236	14
EL237	14
EL238	49
EV079	53
EV080	52
EV081	54
EV083	54
EV113	52
EV114	52
EV118	52
EV119	54
EV203	53
EV204	53
EV206	53

네이처 크래프트
NATURE CRAFT

NC014	48
NC015	48

네오지오
NEO GEO

NL004	56
NL007	56
NL008	56
NL009	51

엘레이나
ELREINA

EL043	15
EL044	15
EL045	15
EL047	15
EL049	14
EL051	15

DW269(EW269)*	42
DW307(EW307)*	35
DW308(EW308)*	35
DW350(EW350)*	40
DW354(EW354)*	42
DW371(EW371)*	43
DW388(EW388)*	37
DW398(EW398)*	41
DW400(EW400)*	40
DW406(EW406)*	29
DW456(EW456)*	38
DW467(EW467)*	44
DW548(EW548)*	33
DW549(EW549)*	35
DW550(EW550)*	36
DW576(EW576)*	36
DWA5(EWA5)*	43
SW001	28
SW002	28
SW003	28
SW004	28
SW005	28
SW006	28

일반추상
ABSTRACT

ML13	56
ML14	56
ML19	52
ML20	52
ML22	52
ML23	48
ML24	48
ML25	48

ML31	56
ML41	50
ML42	50
ML43	50
ML44	50
ML45	14
ML46	14
ML47	14
ML48	14
ML49	14
ML50	14
ML51	14
ML52	15
ML53	14
ML54	14
ML55	47
ML56	49
ML57	49
ML58	49
ML59	50
ML60	50
ML61	50
ML62	51
ML63	51
ML64	51
ML65	47
ML66	47
ML67	46
ML68	46
ML69	46
RM12	48
RM13	48

용도별 제안
PROPOSAL

몰딩 & 도어 MOLDING & DOOR	
인테리어널버	데코널버
CW611 *	US20150G 59
CW617 *	FZ80589B 59
CW625 *	G4702Q5 58
CW626 *	A7001F0 58
CW627 *	GA804T1 58
CW628 *	FW50362G 58
CWPF3 *	MQ808M8 58
RS104 *	WAR75G9 58
RS105 *	YEK61G9 58

Eco-friendly

LG Hausys interior film is an eco-friendly surface finishing material that puts the health and safety of customers as the top priority

1 Satisfaction with green certification on standards

- We manage the emission of harmful heavy metals (lead, cadmium, mercury, hexavalent chrome) and formaldehyde (HCHO) below the standard rates.

Environmental Mark Certification Criteria

Standard Below 1,000 mg/kg	Heavy metals Pb, Cd, Hg, Cr ⁶⁺
Below standards	

Standard Below 0.015 mg/m ² .h	Formaldehyde HCHO
Below standards	

2 We minimize the emission of volatile organic compounds (VOCs, toluene).

Environmental Mark Certification Criteria

Standard Below 0.080mg/m ² .h	Toluene Toluene
Below standards	

3 We do not use phthalate plasticizer which are toxic to humans

- Advanced countries (European nations, the United States, Japan, etc.) prohibit the use of phthalate plasticizer mainly for children's goods.
- Korea also limits the use of phthalate plasticizer for decoration materials (wallpapers, floorings) based on Korea Voluntary Safety Standards.

Phthalate Plasticizer Test Results (SGS TEST Report)

Total phthalate	Standard Below 0.1 %	UNDETECTED
DEHP		SUBMINIMUM
DBP		SUBMINIMUM
BBP		SUBMINIMUM

Flame Resistant Antibacterial

LG Hausys interior film is a flame resistant product for the protection of lives and property of customers from fire

(It passes the strict flame resistant test of Korea Institute of Fire Industry & Technology)

We secure excellent antibacterial effect by adding antimicrobial agent.

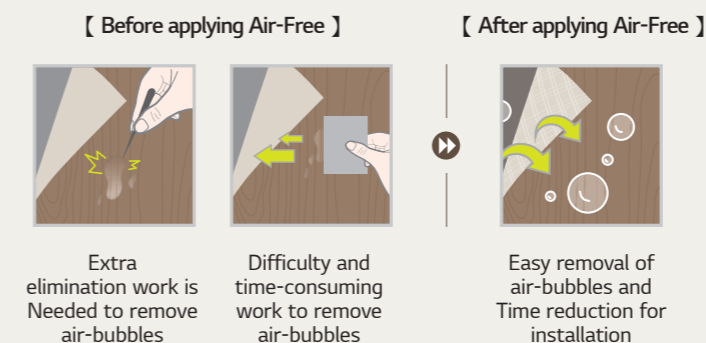
(Antibacterial function are applied to Premium Wood products.)

Flame resistant test standards by items & Test Result

Length of carbonization	Standard Below 20cm	TEST RESULT PASS
Extent of carbonization	Standard Below 30cm ²	TEST RESULT PASS
Afterflame time	Standard Below 3sec	TEST RESULT PASS
Afterglow time	Standard Below 5sec	TEST RESULT PASS
Smoke Density	Standard Below Max Ds=200	TEST RESULT PASS

AIR-FREE

LG Hausys interior film, an Air-Free film that prevents the formation of bubbles during the construction, extended its application to the whole group of flame resistant and non-flame resistant products.



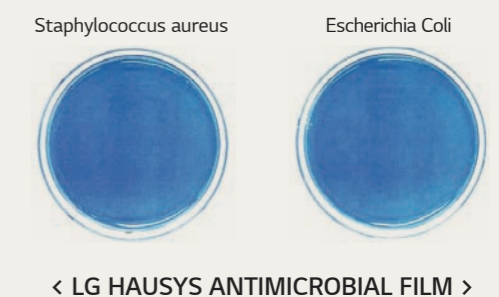
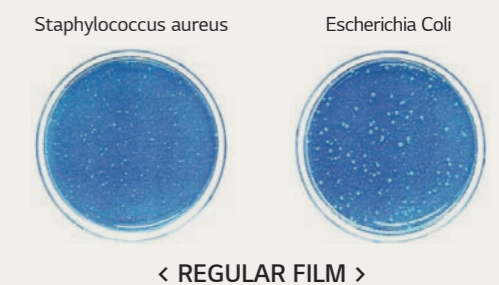
Antibacterial Test Result by FITI Testing Institute (JIS Z 2801:2010 Film adhesion method)

(Unit: Number of bacteria / cm²)

Types of bacteria		Regular Film	LG Hausys Antimicrobial Film
Staphylococcus aureus (causing food poisoning)	Initial bacterial content	1.6×10 ⁴	1.6×10 ⁴
	After 24 hours	5.3×10 ³	< 0.63
Escherichia Coli	Initial bacterial content	1.6×10 ⁴	1.6×10 ⁴
	After 24 hours	2.4×10 ⁵	< 0.63

※ When the number of bacteria is under 0.63, the antibacterial level is 99.9%

Antibacterial TEST Picture (After 24 hours)





RWD01 **N**

오크 OAK



RWD02 **N**

시카모아 SYCAMORE



RWD03 **N**

지브라 ZEBRA



RWD04 **N**

티크 TEAK



RWD02, RWD04

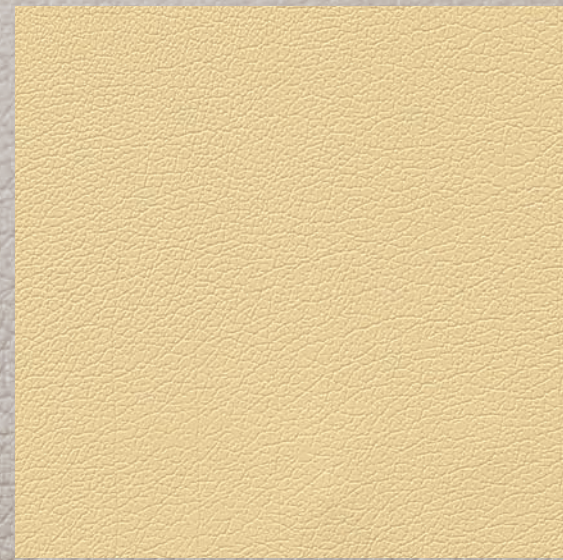


RWD03, RWD04

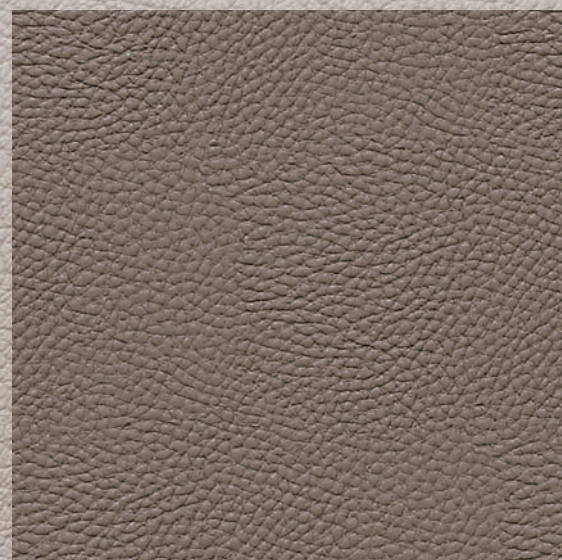
REAL | JUST LEATHER



RLT02
N
스킨
(크림 화이트)
SKIN



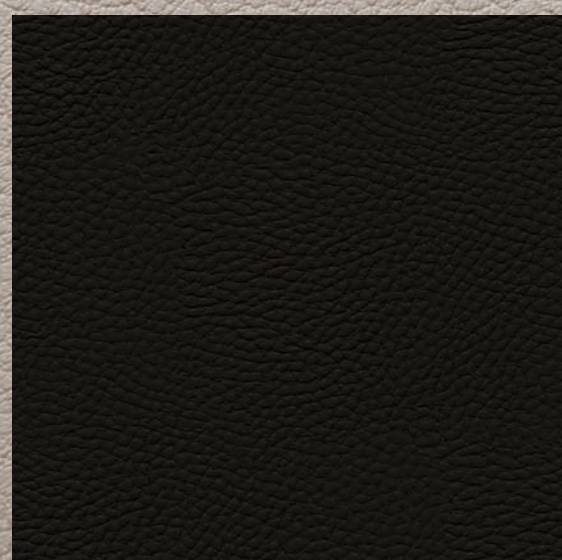
RLT06
N
스킨
(라떼)
SKIN



RLT01
N
스킨
(카멜)
SKIN



RLT05
N
스킨
(레드빈)
SKIN



RLT04
N
스킨
(딥 브라운)
SKIN



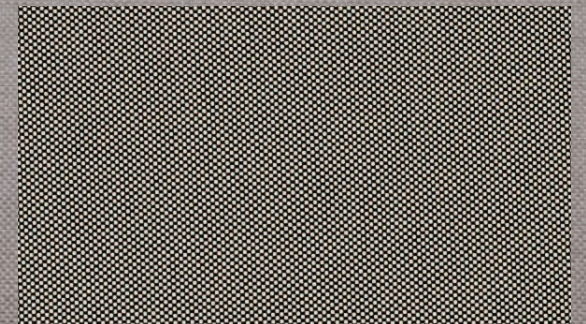
RLT03
N
스킨
(틴 블랙)
SKIN

REAL | FABRIC

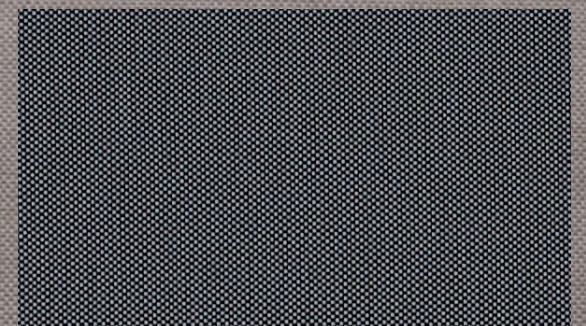
N
신패턴
New



RVE03
N
우븐
(미스트 그레이)
WOVEN



RVE05
N
우븐
(월 그레이)
WOVEN



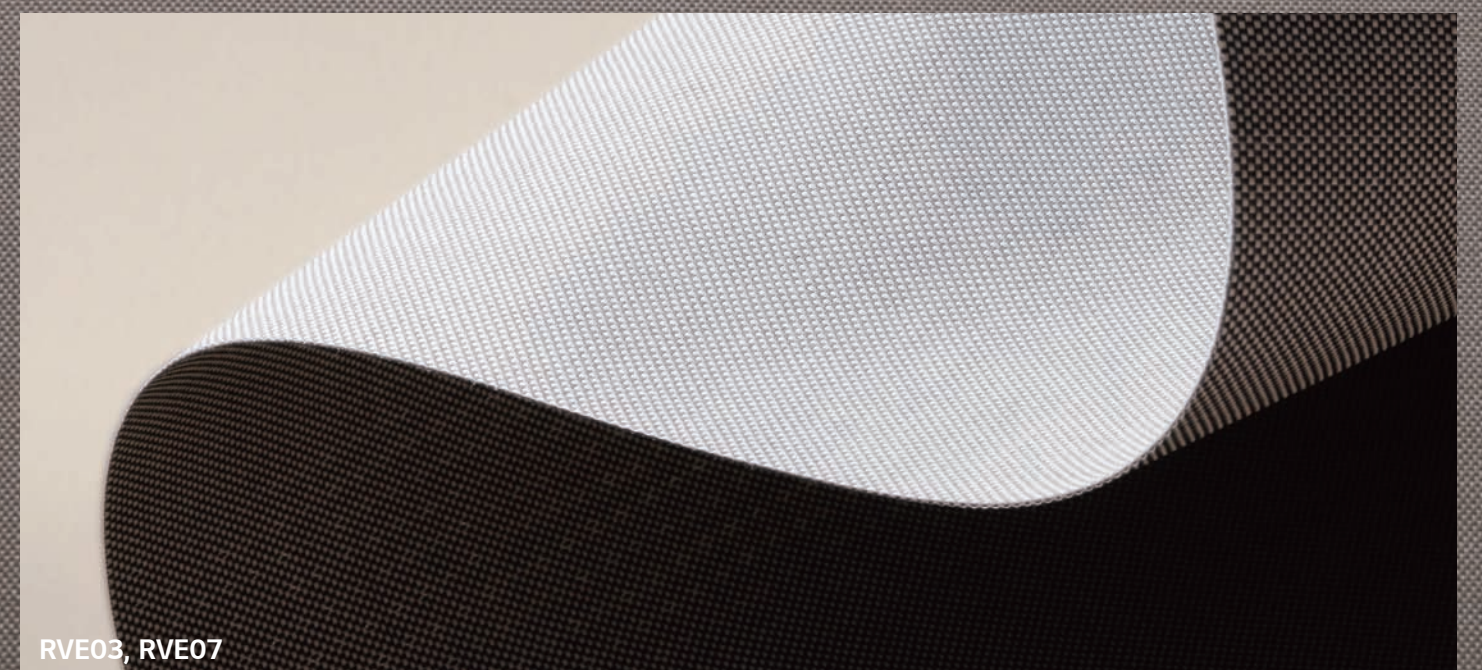
RVE06
N
우븐
(차콜)
WOVEN



RVE07
N
우븐
(모카 브라운)
WOVEN



RVE04
N
우븐
(딥 스페이스)
WOVEN



RVE03, RVE07

PLAIN | SOLID EMBOSS

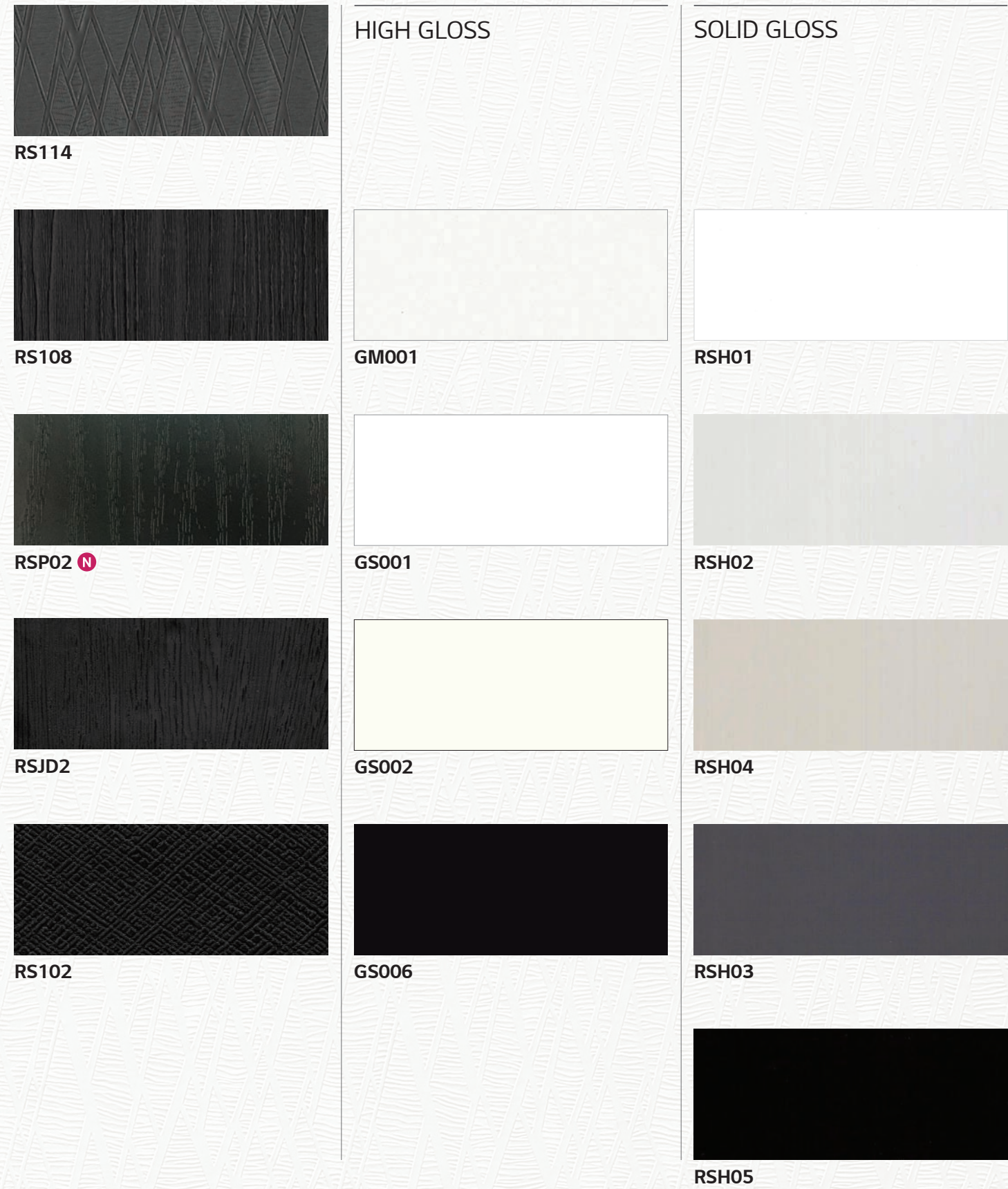


솔리드
SOLID

메탈
METAL

패브릭
FABRIC

N
신패턴
New



PLAIN

—
SOLID
—

SOLID EMBOSS / HIGH GLOSS / SOLID

패브릭, 메탈 등 패턴의 사실적인 질감과
풍성한 솔리드 컬러 구성이 트렌디하고 감각적인
디자인과 세련된 공간 스타일을 연출합니다.

Realistic pattern texture and solid color composition
create sensitive design and refined space style.

—

PLAIN | SOLID



RS124 ^N RS86 RS130 ^N



RS118 ^N RS56 RS71



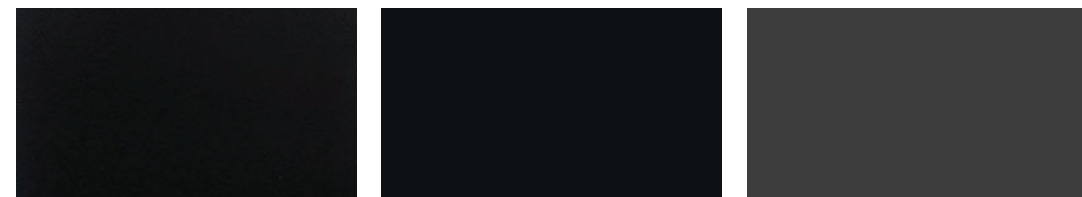
RS119 ^N RS91 RS57



RS125 ^N RS55 RS35

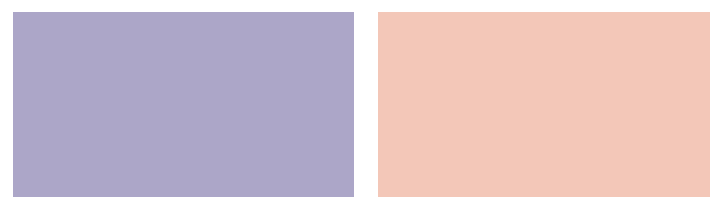


RS122 ^N RS52 RS121 ^N



HS002 RS22 RS51

PLAIN



RSCK1 ^N RS81



RS13 RS69 RS70 RS90



RS40 RS92 RS49 RS80



RS48 RS76 RS68 RS93



RS47 RS45 RSCJ1 RS123 ^N



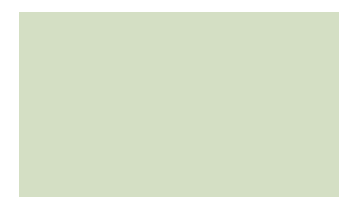
RS46 RS100 RS21

솔리드
SOLID

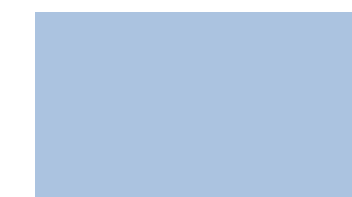
메탈
METAL

패브릭
FABRIC

^N
신제품
New



RS58



RS85



RS87



RS82



RS89



RS31



RS88



RS84



RE03



RS62



RS126 ^N



RS61



RB08



RS83



RS120 ^N



RS27

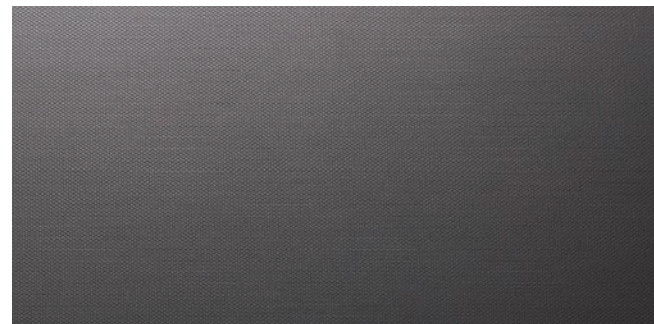


RS127 ^N

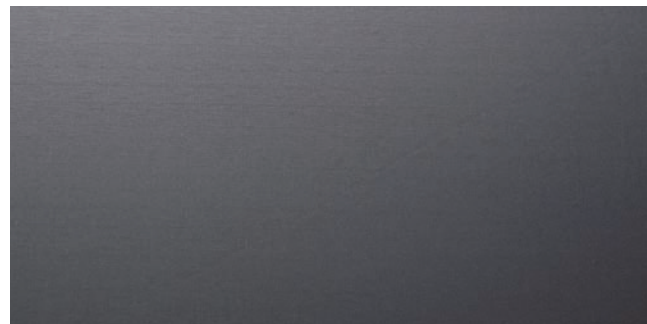


RS128 ^N

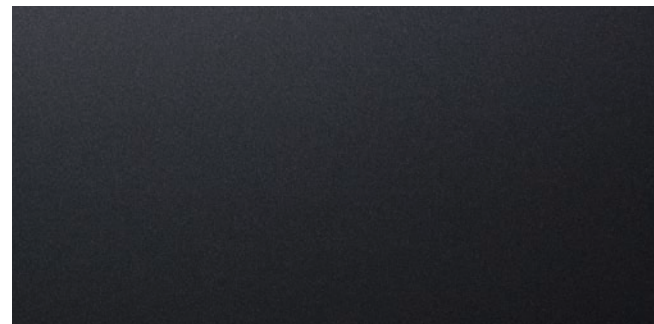
PLAIN | NEW METAL / METAL



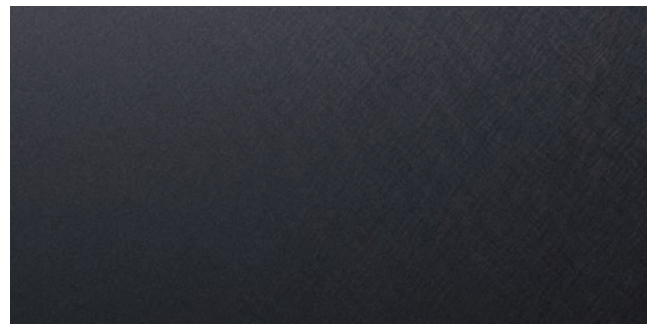
RP59 **N**



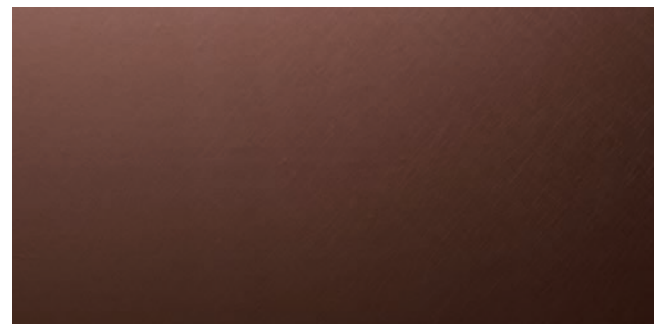
MP005 **N**



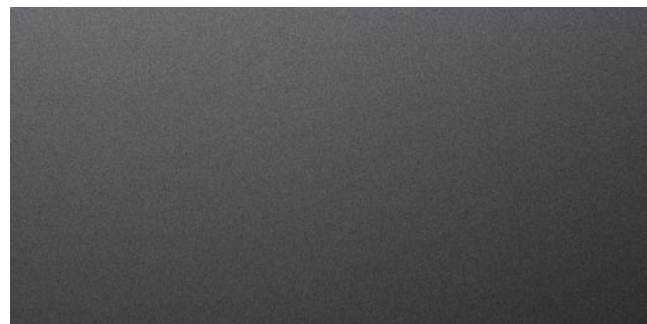
MP001 **N**



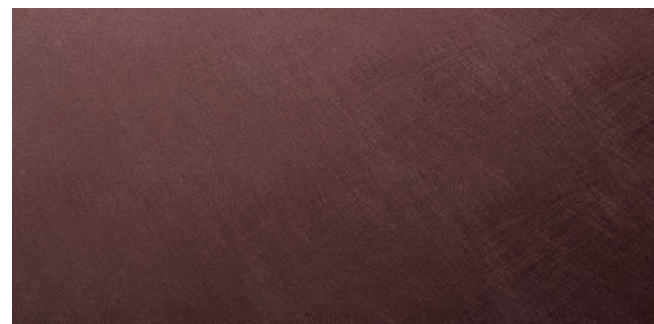
MP002 **N**



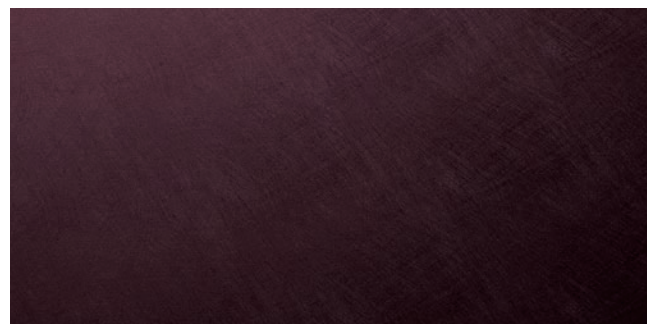
RP58 **N**



MP006 **N**



MP004 **N**



MP003 **N**

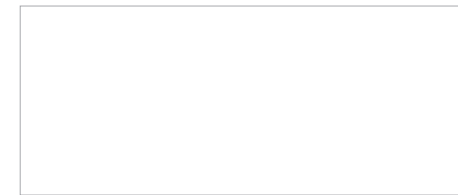
솔리드
SOLID

메탈
METAL

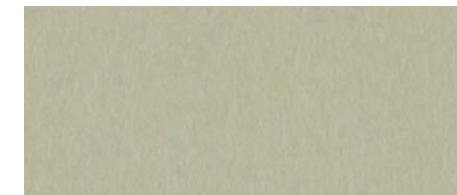
패브릭
FABRIC

N

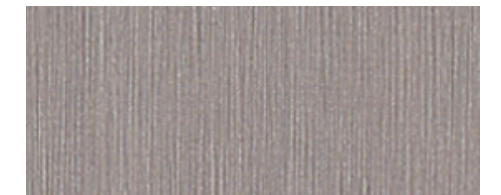
신패턴
New



MS21



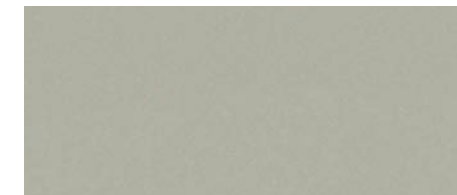
MS09



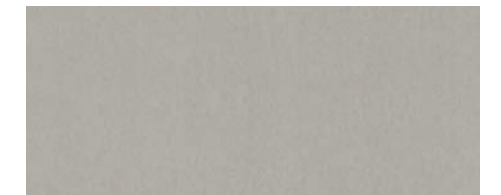
RP42



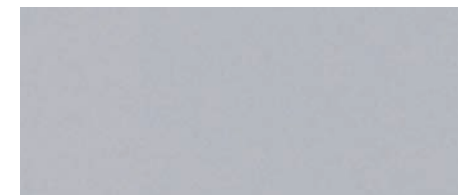
ME11



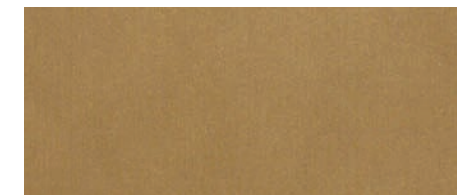
MS18



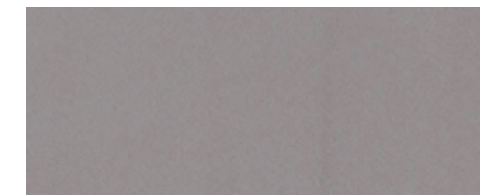
RP03



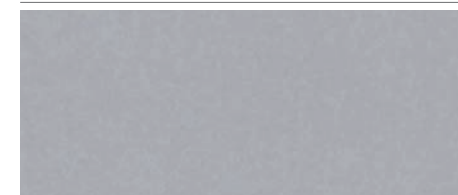
MS19



RP06



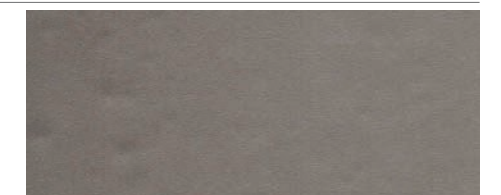
MS20



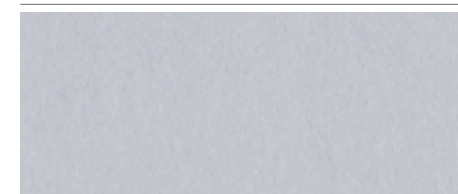
RP08



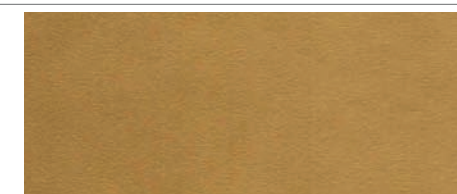
RP07



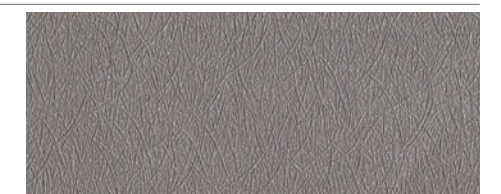
RP46



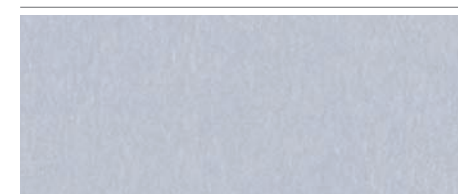
RP04



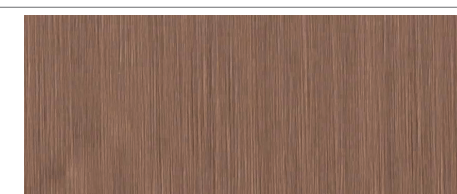
RP48



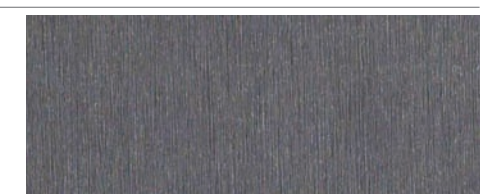
RP49



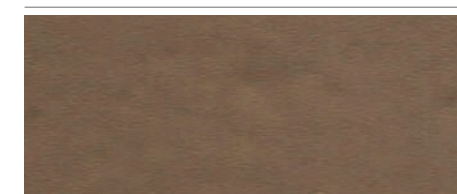
MS01



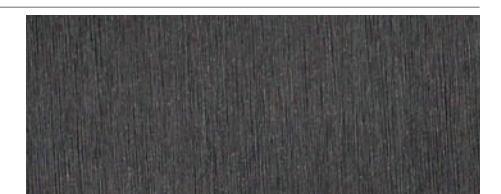
RP45



RP50



RP47



RP51

PLAIN FABRIC



솔리드
SOLID

메탈
METAL

패브릭
FABRIC

N

신패턴
New



WOOD CLASSIC WOOD



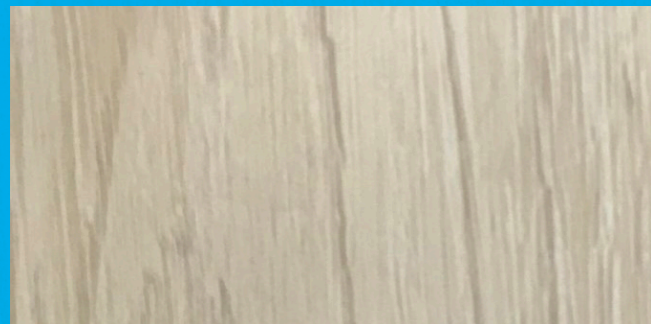
PW001

아티젠 오크 ARTISAN OAK



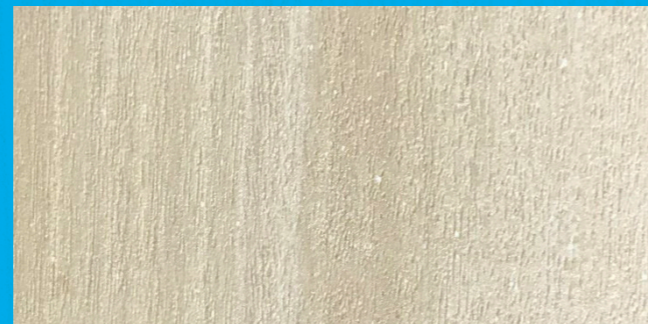
PW009 **N**

애쉬 ASH



PW004 **N**

아티젠 오크 ARTISAN OAK



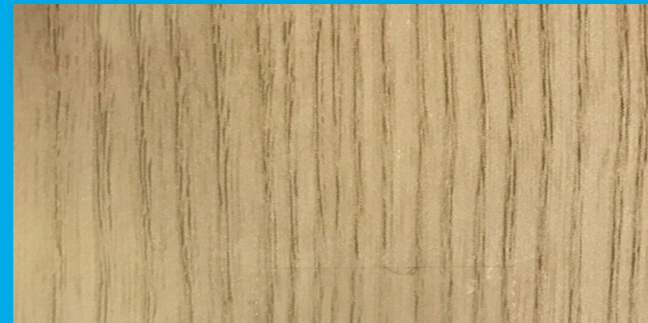
PW005 **N**

아카시아 ACACIA



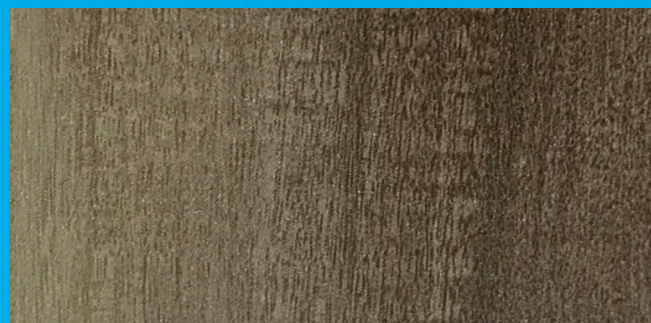
PW010 **N**

애쉬 ASH



PW011 **N**

애쉬 ASH



PW006 **N**

아카시아 ACACIA



PW008 **N**

아카시아 ACACIA

클래식 우드
CLASSIC WOOD

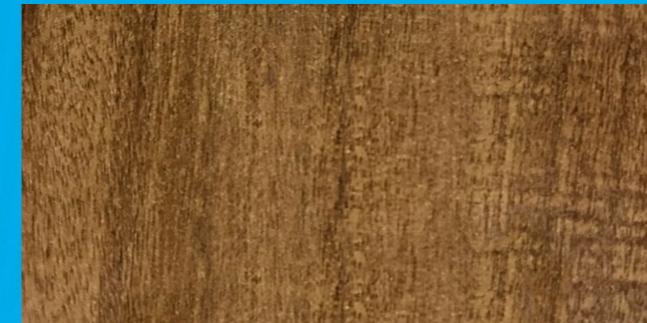
프리미엄 우드
PREMIUM WOOD

우드
WOOD

N
신패턴
New

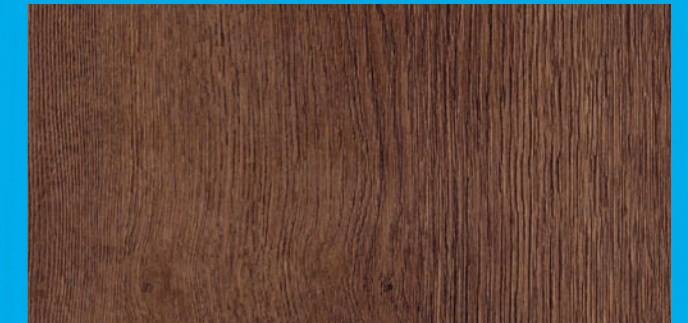


PW007



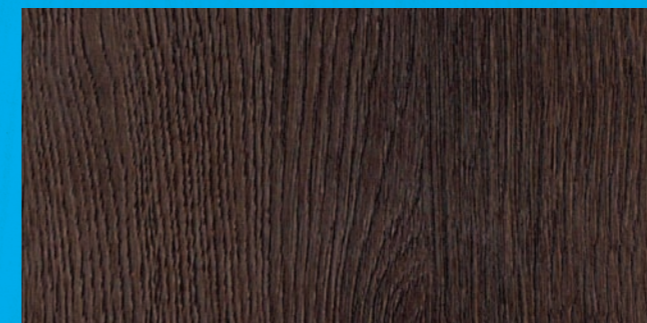
PW007 **N**

아카시아 ACACIA



PW002

아티젠 오크 ARTISAN OAK



PW003

아티젠 오크 ARTISAN OAK



PW012 **N**

애쉬 ASH

WOOD | PREMIUM WOOD



NW076, RS127



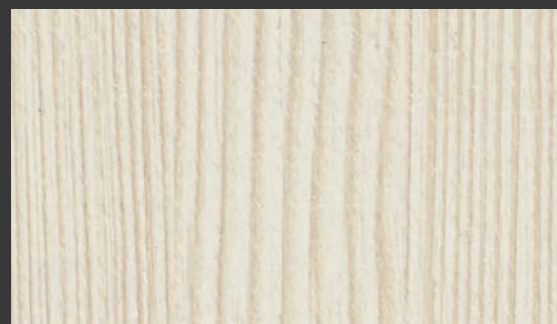
NW053

티크
TEAK



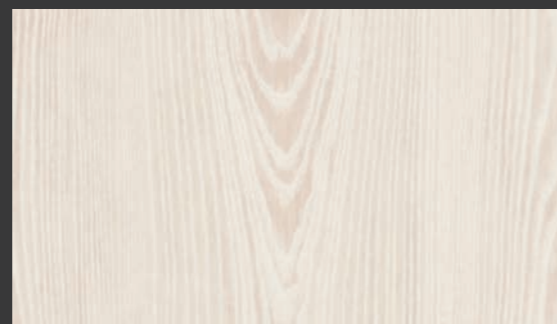
NW080

캐스타노 카두치
CASTAGNO
CARDUCCI



NW076

파인
PINE



NW025

화이트 애쉬
WHITE ASH

클래식 우드
CLASSIC WOOD

프리미엄 우드
PREMIUM WOOD

우드
WOOD

N
신패턴
New



NW073

버치
BIRCH



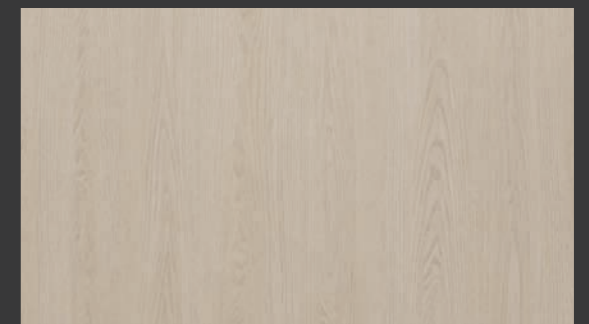
NW099

월넛
WALNUT



NW032

오크
OAK



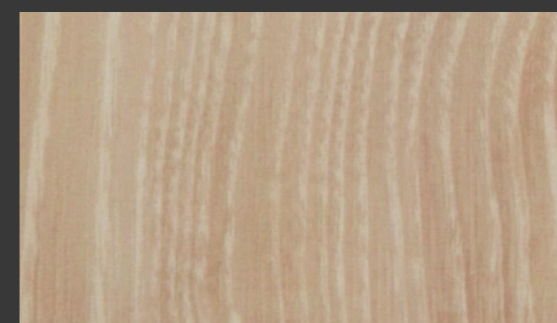
NW082

오크
OAK



NW041

화이트 오크
WHITE OAK



NW026

화이트 애쉬
WHITE ASH



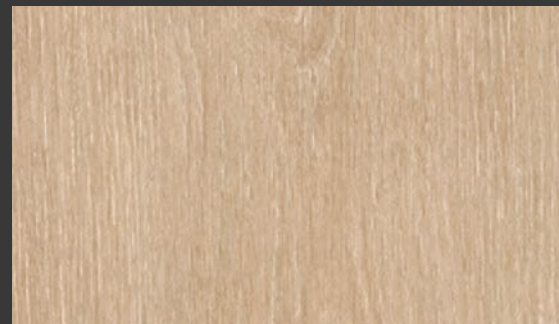
NW062

위자드 그레인
WIZARD
GRAIN



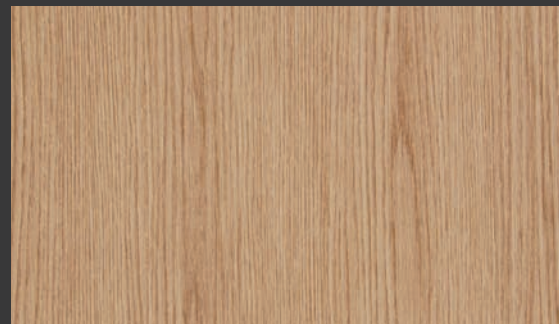
NW099

WOOD | PREMIUM WOOD



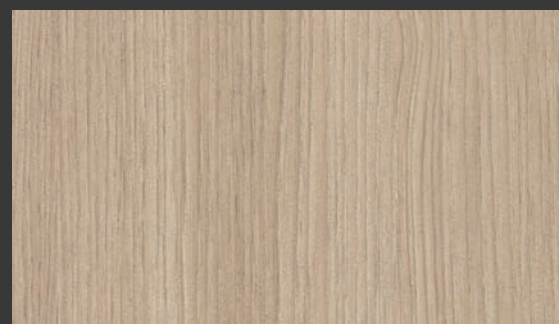
NW014

오크
OAK



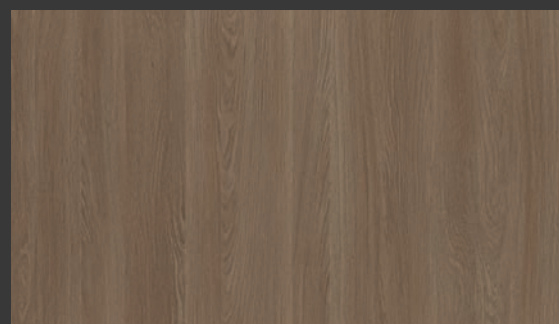
NW033

오크
OAK



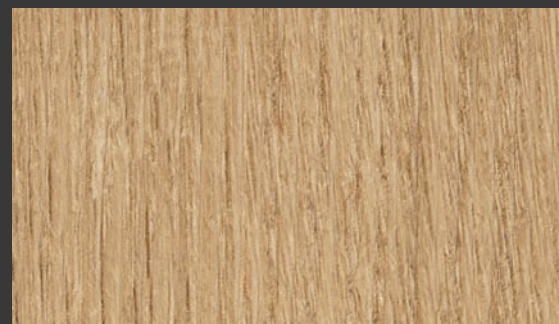
NW100

월넛
WALNUT



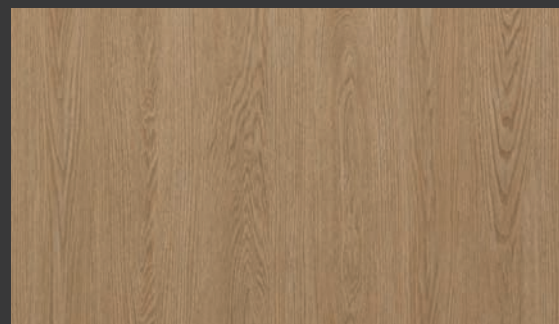
NW086

오크
OAK



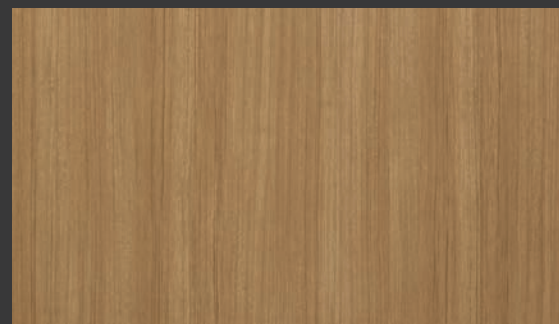
NW042

화이트 오크
WHITE OAK



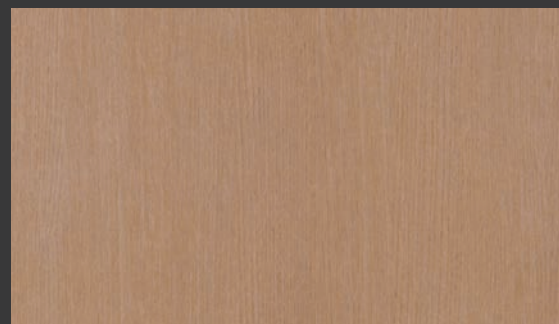
NW083

오크
OAK



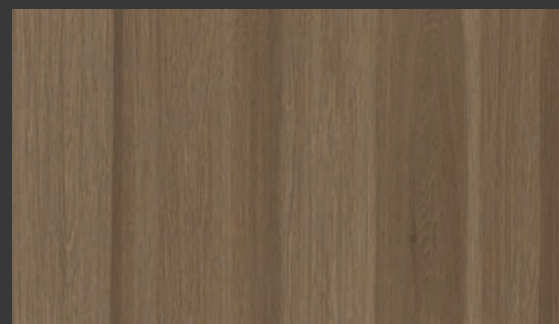
NW088

티크
TEAK



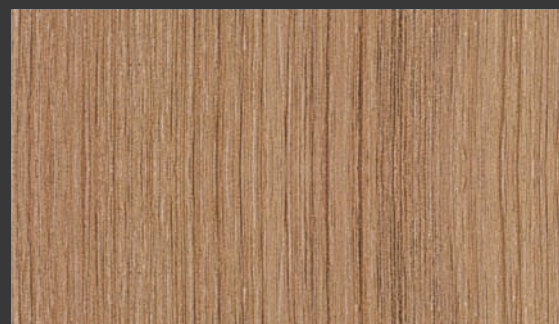
NW011

애쉬
ASH



NW092

라인 티크
LINE TEAK



NW044

월넛
WALNUT

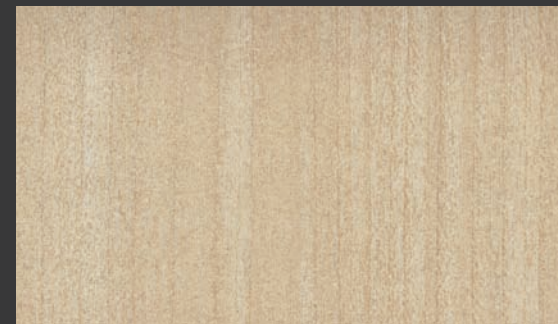
클래식 우드
CLASSIC WOOD

프리미엄 우드
PREMIUM WOOD

우드
WOOD

N

신패턴
New



NW071

메이플
MAPLE



NW057

오크
OAK



NW078

티크
TEAK



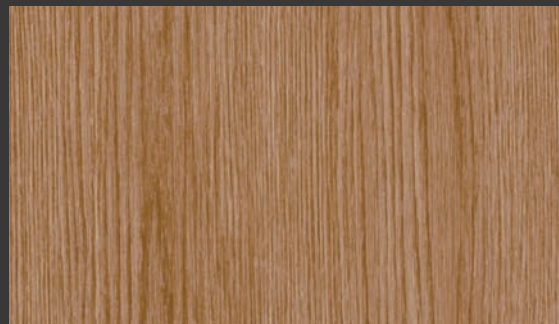
NW038

애쉬
ASH



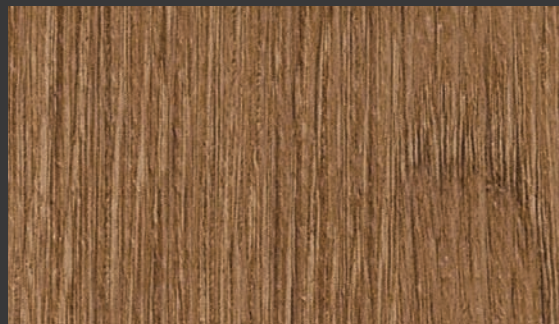
NW083

WOOD | PREMIUM WOOD



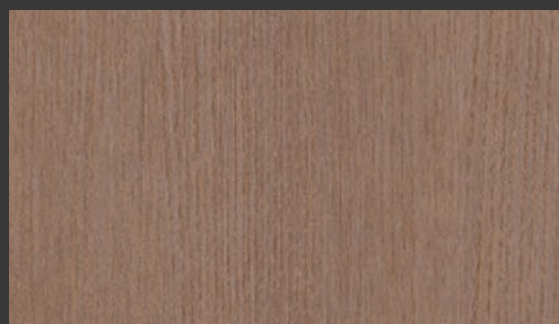
NW034

오크
OAK



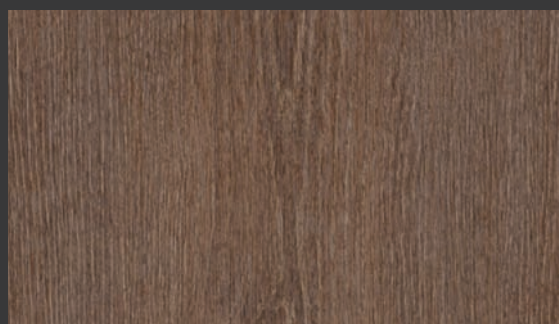
NW043

화이트 오크
WHITE OAK



NW012

애쉬
ASH



NW016

오크
OAK



NW043

클래식 우드
CLASSIC WOOD

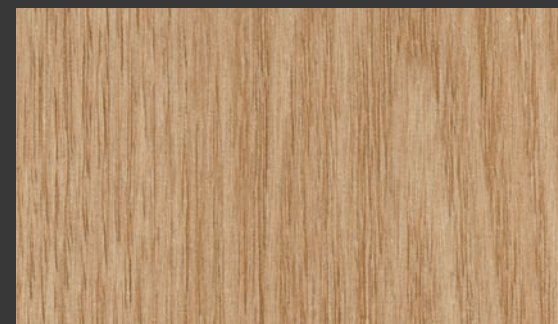
프리미엄 우드
PREMIUM WOOD

우드
WOOD

N
신패턴
New

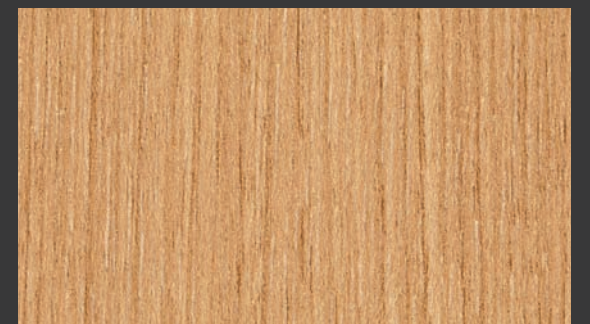


NW089



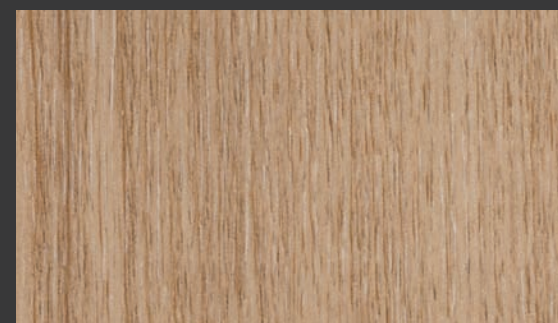
NW070

애쉬
ASH



NW072

티크
TEAK



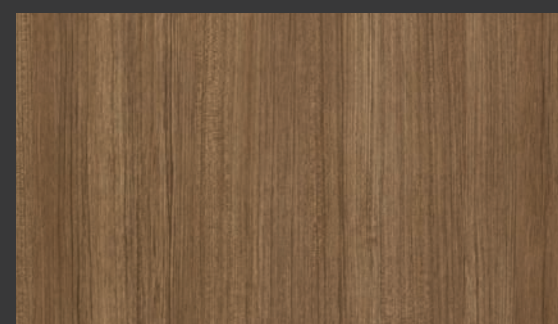
NW039

애쉬
ASH



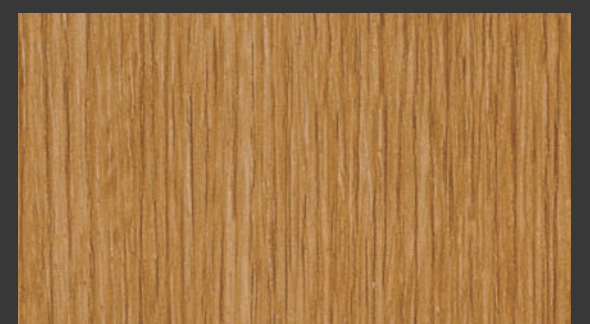
NW074

애쉬
ASH



NW089

티크
TEAK



NW059

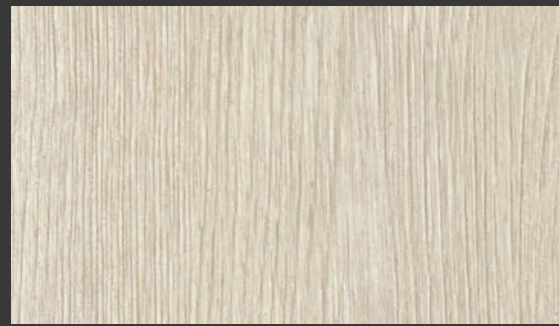
오크
OAK

WOOD | PREMIUM WOOD



NW094

빈티지 오크
VINTAGE
OAK



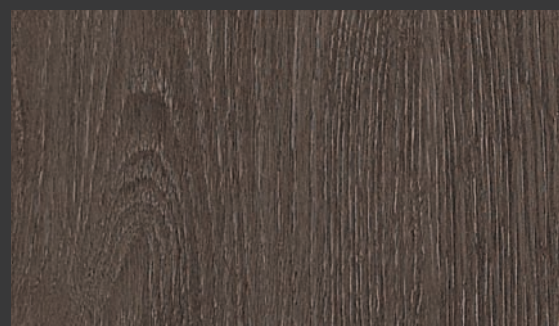
NW097

티크
TEAK



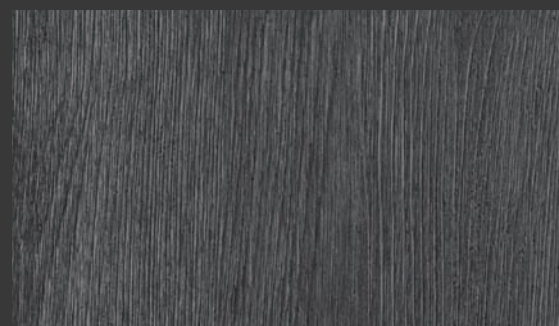
NW095

빈티지 오크
VINTAGE
OAK



NW015

오크
OAK



NW098

티크
TEAK



NW017

오크
OAK



NW095

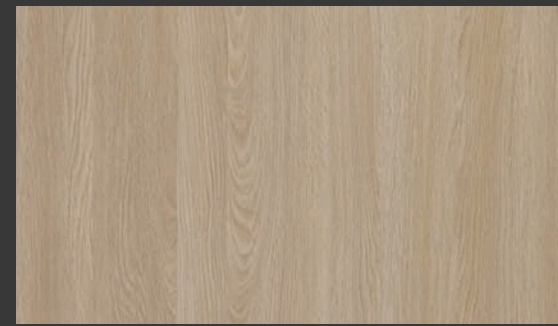
클래식 우드
CLASSIC WOOD

프리미엄 우드
PREMIUM WOOD

우드
WOOD

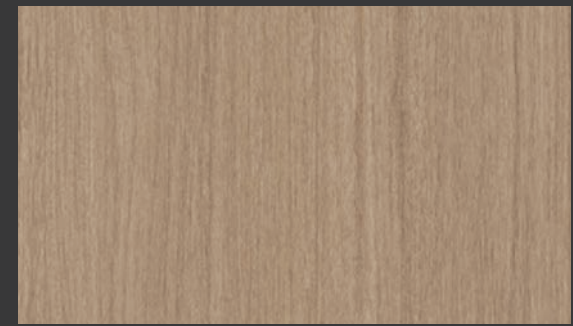
N

신패턴
New



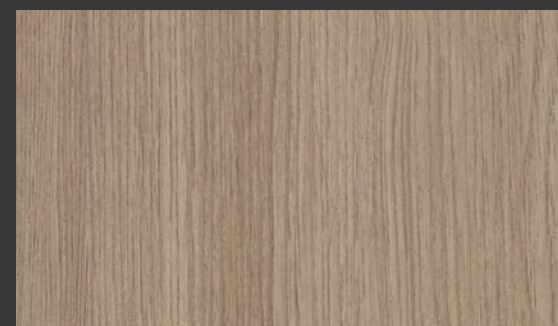
NW085

오크
OAK



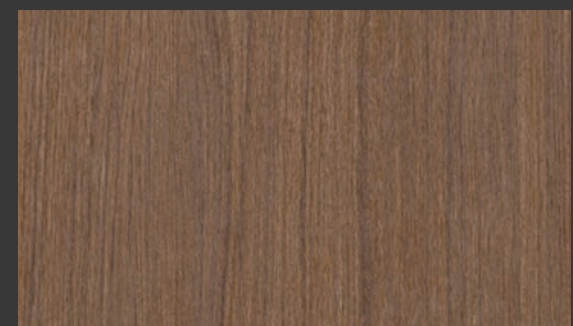
NW006

아마자후우
AMAZAHOUE



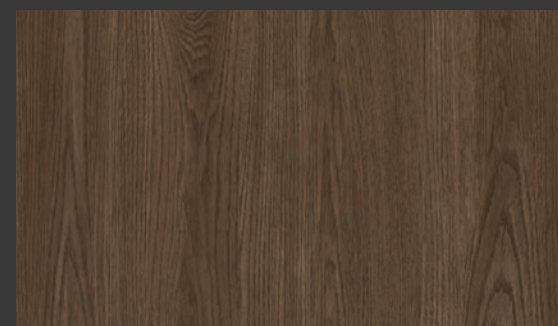
NW101

월넛
WALNUT



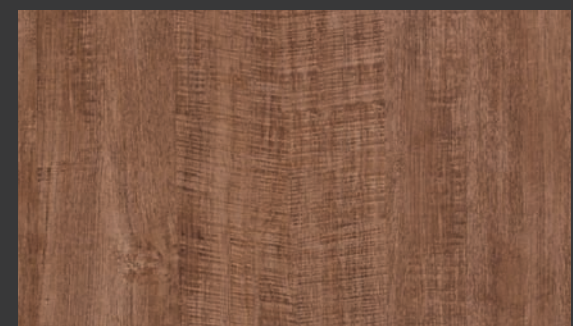
NW007

아마자후우
AMAZAHOUE



NW084

오크
OAK



NW031

엔틱 티크
ANTIQU
TEAK



NW008

아마자후우
AMAZAHOUE



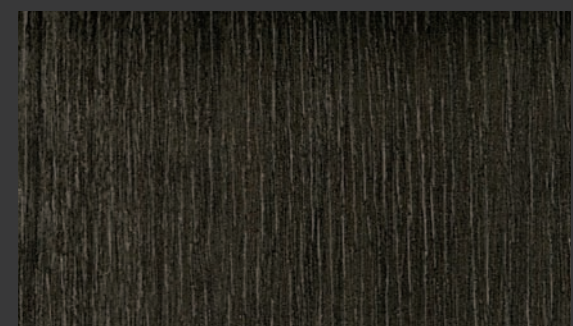
NW096

빈티지 오크
VINTAGE
OAK



NW068

파독
PADOUK



NW056

티크
TEAK

WOOD | PREMIUM WOOD



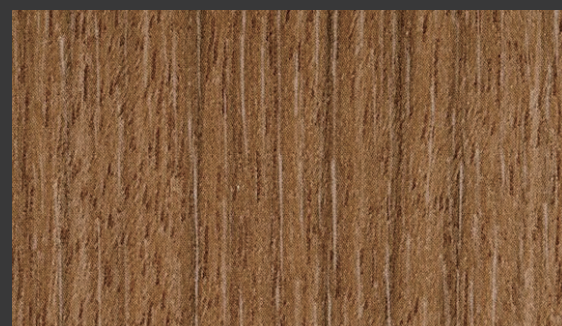
NW058

오크
OAK



NW040

애쉬
ASH



NW067

티크
TEAK



NW087

오크
OAK



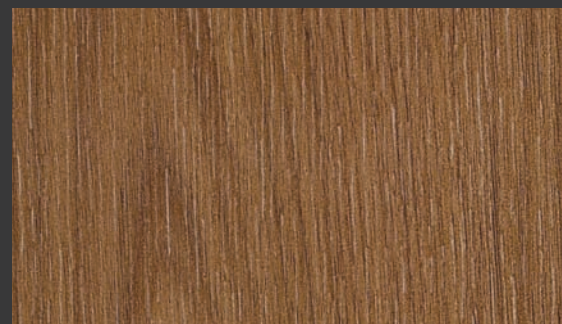
NW054

티크
TEAK



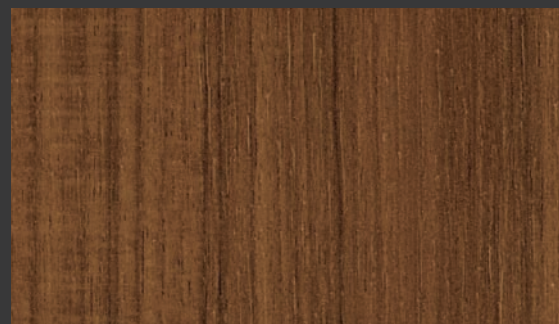
NW060

월넛
WALNUT



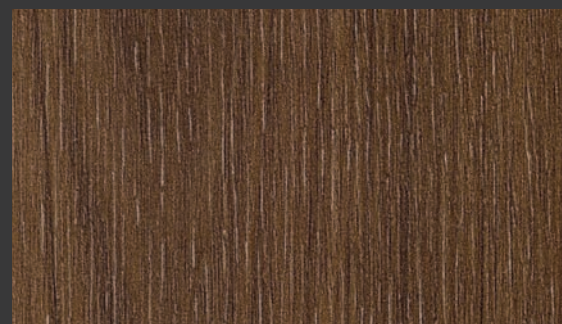
NW045

월넛
WALNUT



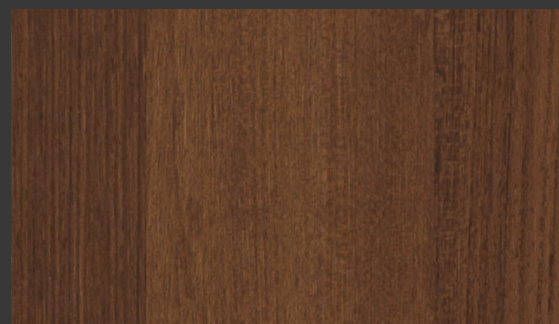
NW063

티크
TEAK



NW046

월넛
WALNUT



NW081

월넛 큐빅
WALNUT CUBIC

클래식 우드
CLASSIC WOOD

프리미엄 우드
PREMIUM WOOD

우드
WOOD

N

신패턴
New



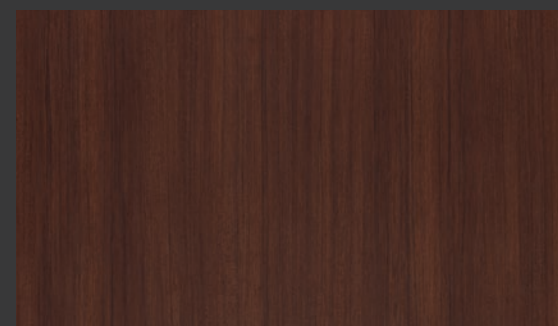
NW037

멜바우
MERBAU



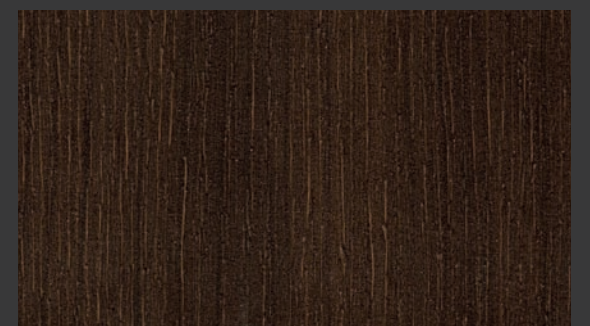
NW055

티크
TEAK



NW090

티크
TEAK



NW079

체리
CHERRY



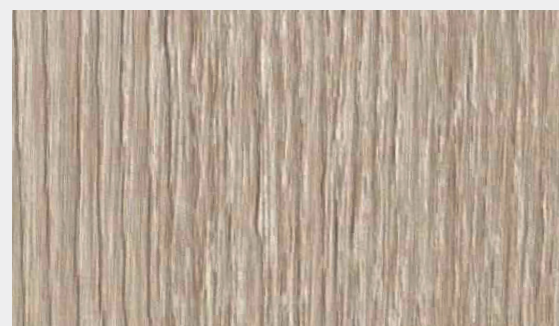
WOOD | WOOD



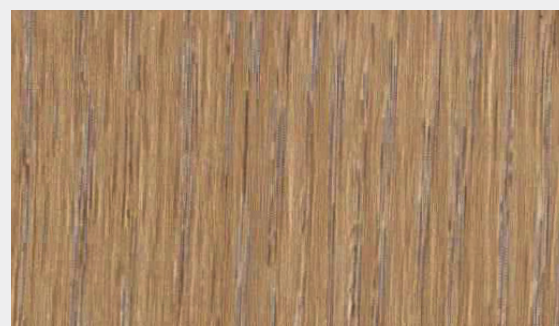
SW001
N
애쉬
ASH



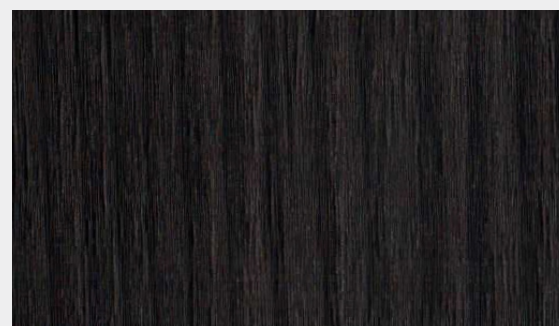
SW004
N
오크
OAK



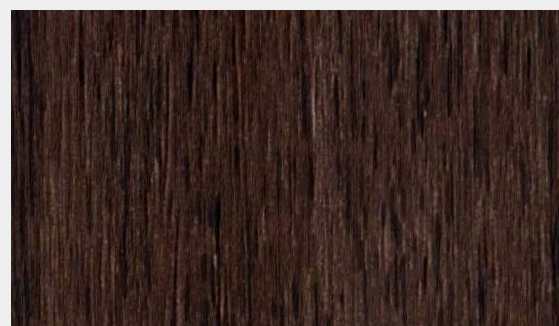
SW002
N
애쉬
ASH



SW005
N
오크
OAK



SW003
N
애쉬
ASH



SW006
N
오크
OAK



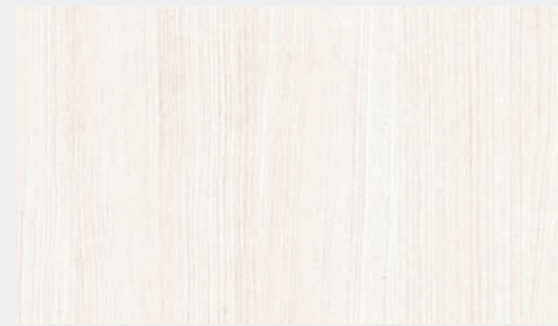
CW621, RS120

클래식 우드
CLASSIC WOOD

프리미엄 우드
PREMIUM WOOD

우드
WOOD

N
신패턴
New



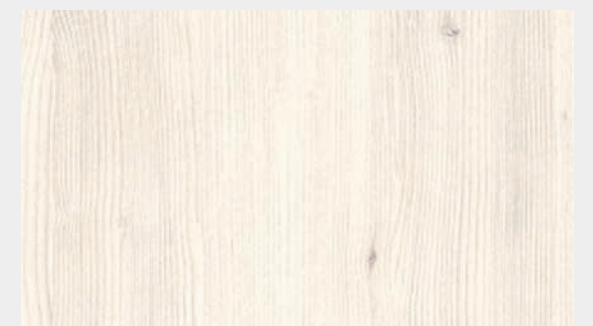
CW437
체리
CHERRY



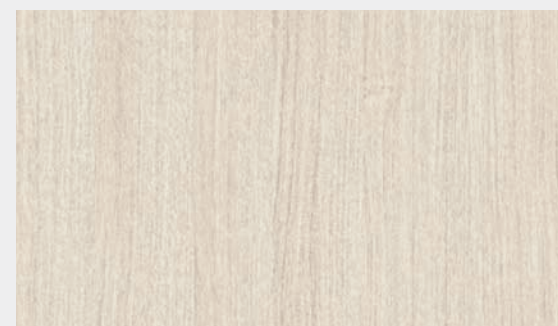
CW621
N
엔틱
페인티드 우드
ANTIQUÉ
PAINTED
WOOD



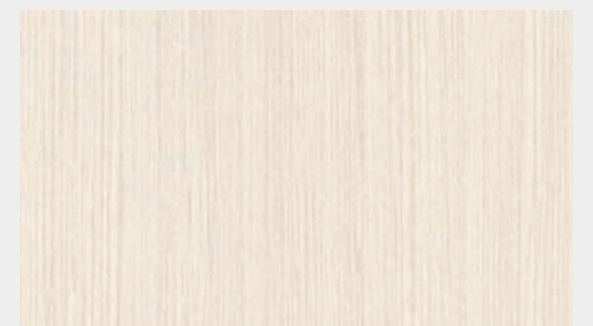
CW511
엘름
ELM



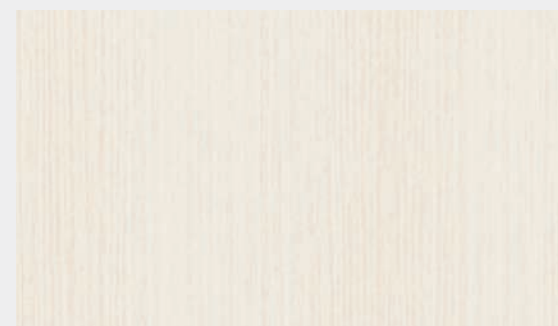
CW567
파인
PINE



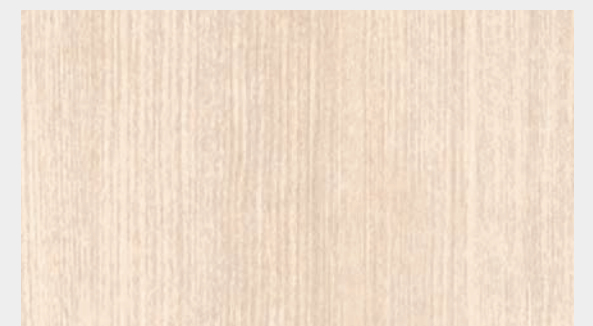
CW552
버치
BIRCH



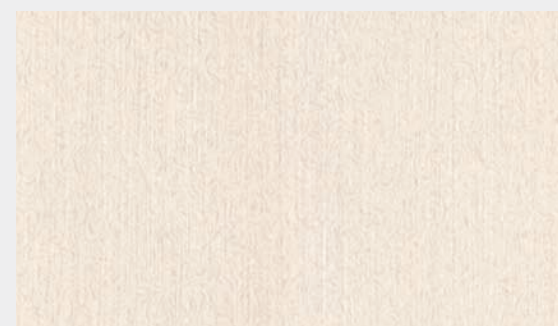
CW424
올리브 라인
OLIVE LINE



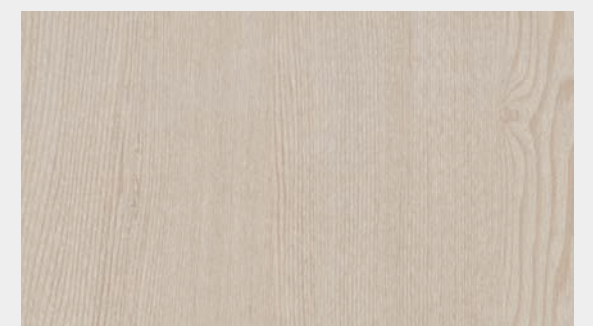
DW406
위자드 그레인
WIZARD
GRAIN



CW530
애쉬
ASH



CW383
아이비
IVY

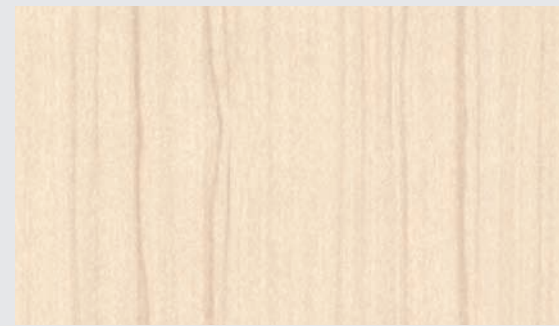


CW575
애쉬
ASH



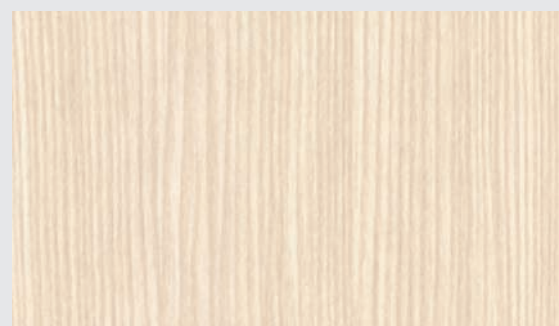
CW521

파인
PINE



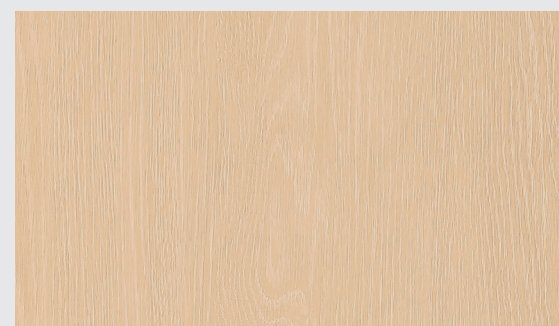
CW544

로즈 우드
ROSE WOOD



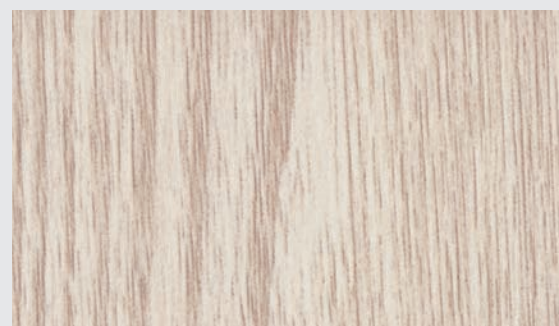
CW240

엘름
ELM



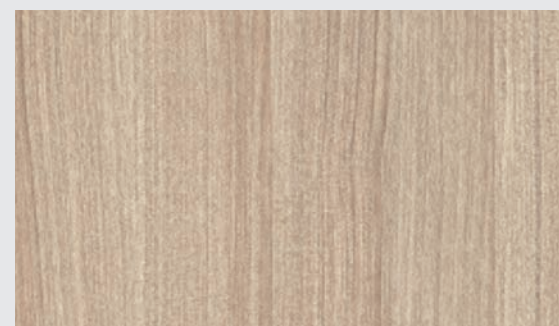
CW618

N
워시드 오크
WASHED
OAK



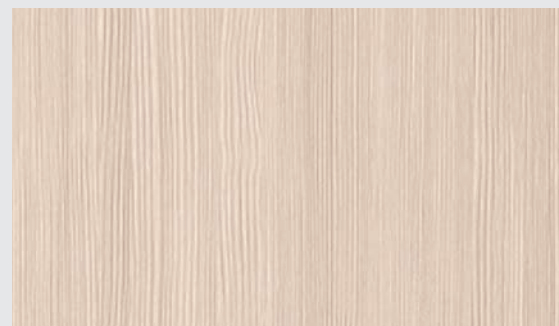
CW600

애쉬
ASH



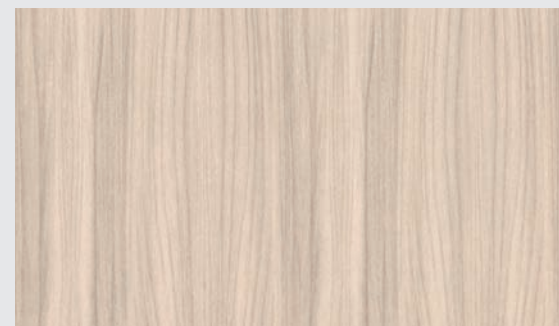
CW553

버치
BIRCH



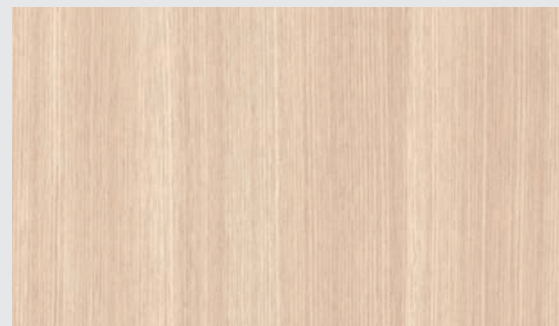
CW523

파인
PINE



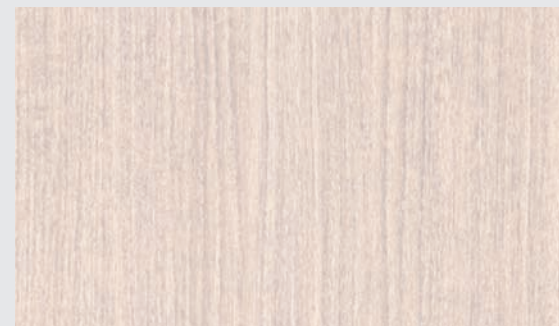
CW516

월넛
WALNUT



DW161

오크
OAK



CW390

월넛
WALNUT



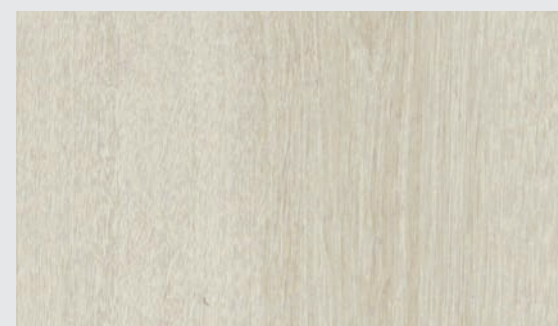
CW616

엘름
ELM



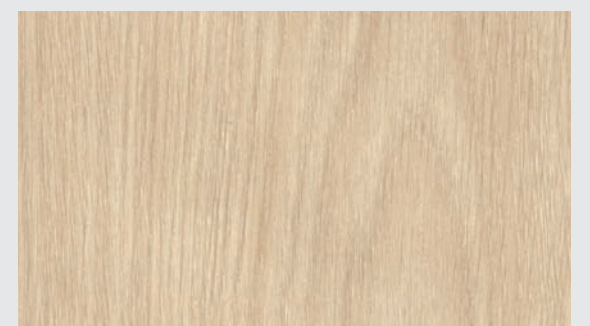
CW597

오크
OAK



CW606

엘름
ELM



CW615

오크
OAK



CW615



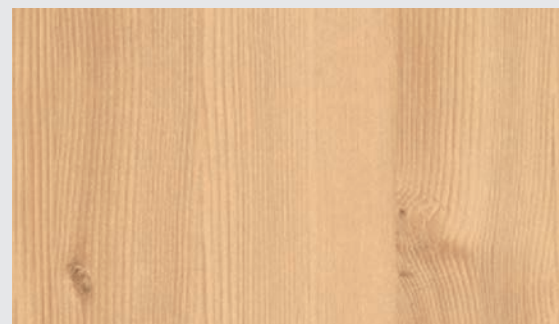
CW590

버치
BIRCH



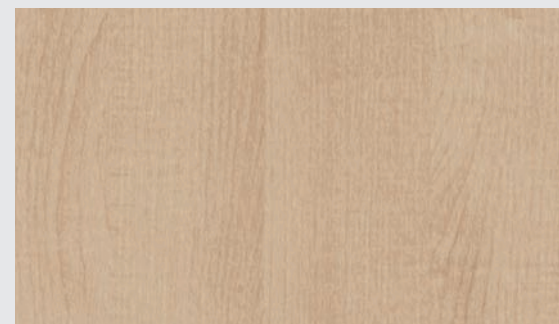
CW537

버치
BIRCH



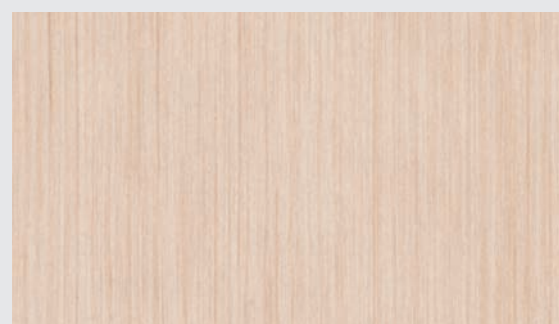
CW569

파인
PINE



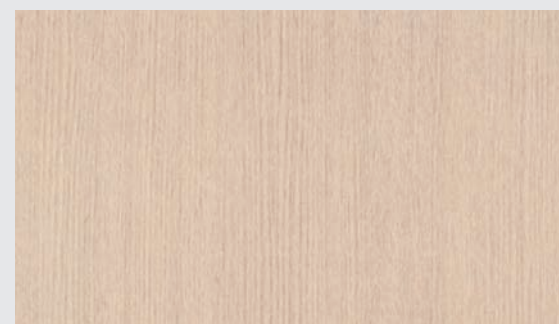
CW527

메이플
MAPLE



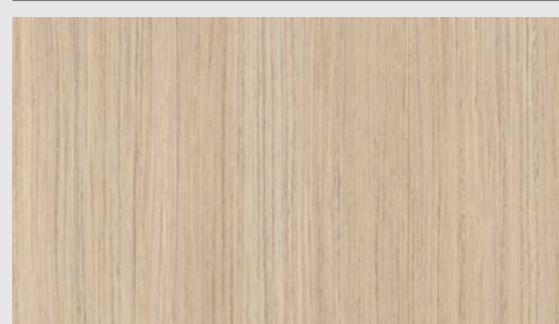
CW001

엘름
ELM



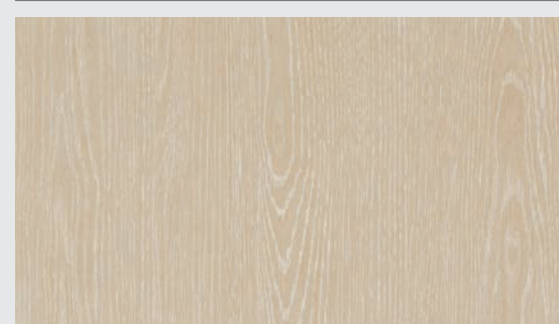
CW509

엘름
ELM



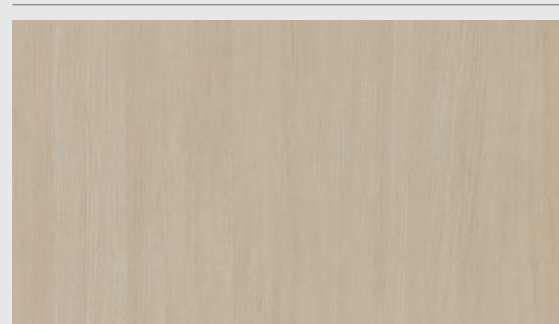
CW506

티크
TEAK



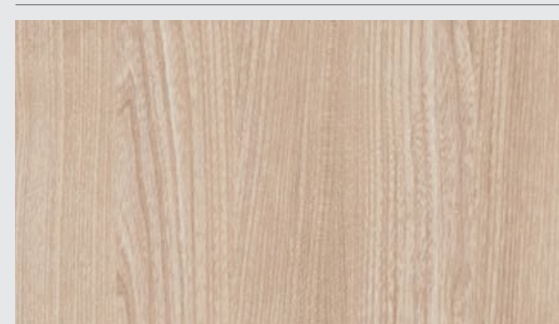
CW604

워시드 오크
WASHED
OAK



CW603

오크
OAK



DW182

티크
TEAK



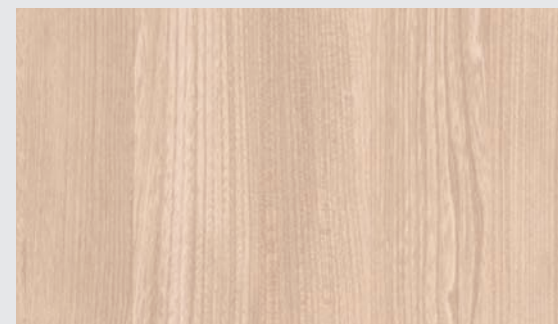
DW548

오크
OAK



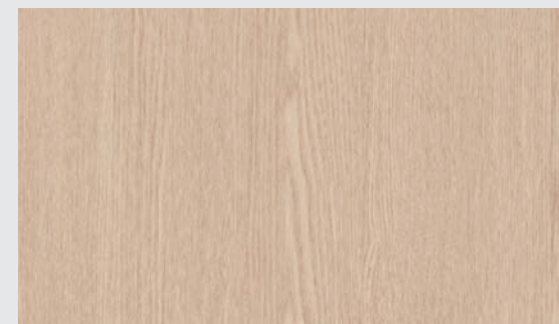
CW438

체리
CHERRY



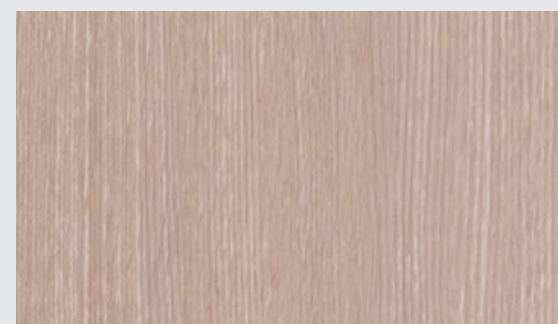
DW207

티크
TEAK



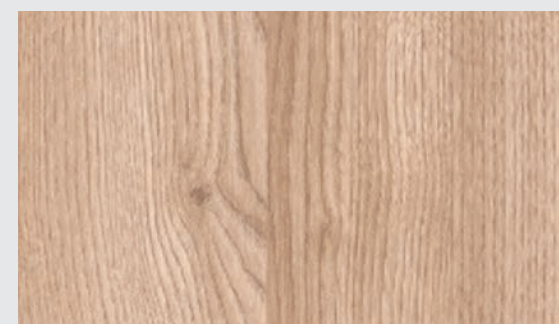
CW518

애쉬
ASH



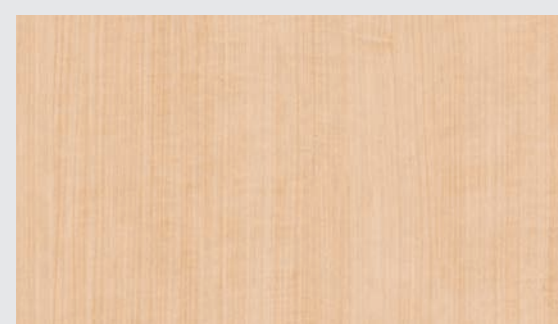
CW151

오크
OAK



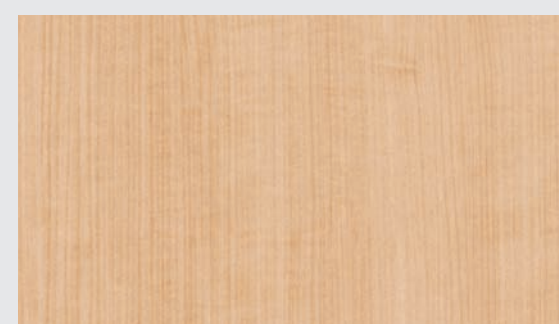
CW533

오크
OAK



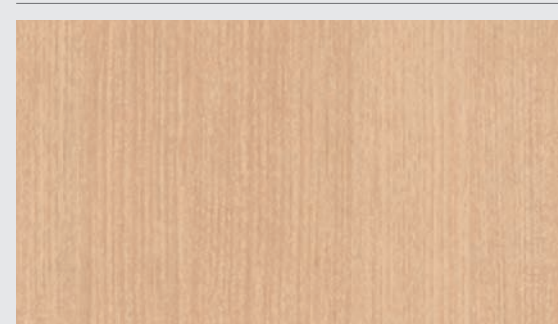
CW141

메이플
MAPLE



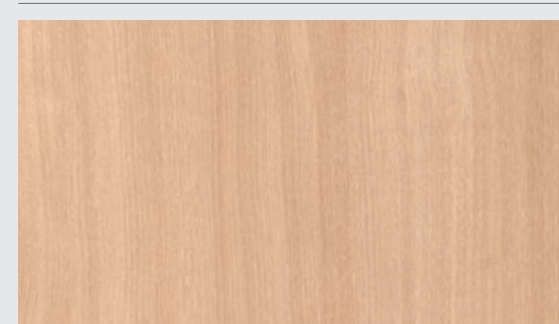
CW142

메이플
MAPLE



CW531

애쉬
ASH



CW453

노체
NOCE



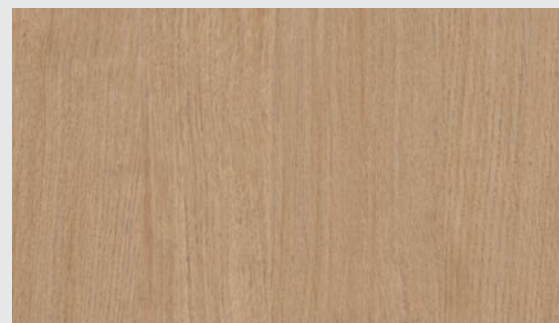
CW602

애쉬
ASH



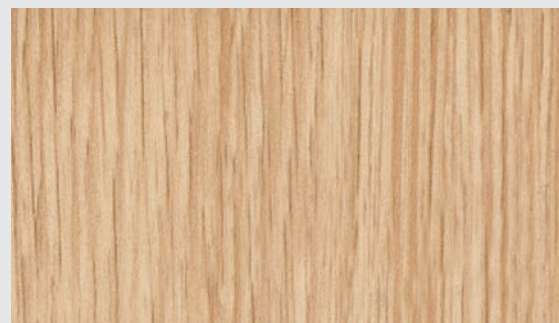
CW599

오크
OAK



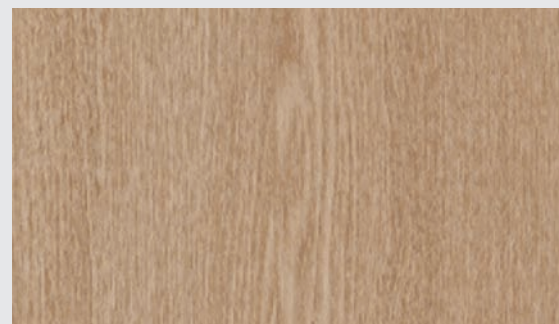
CW557

오크
OAK



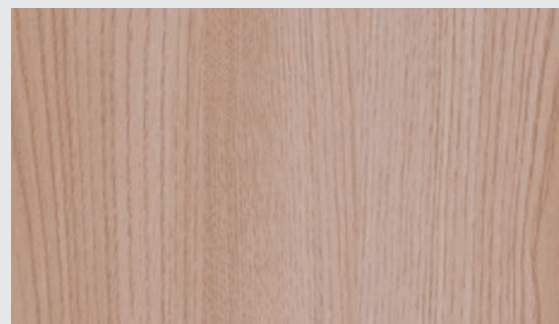
CW598

오크
OAK



CW519

애쉬
ASH



CW358

캐스타노
카두치
CASTAGNO
CARDDUCI



CW612

클래식 우드
CLASSIC WOOD

프리미엄 우드
PREMIUM WOOD

우드
WOOD

N

신패턴
New



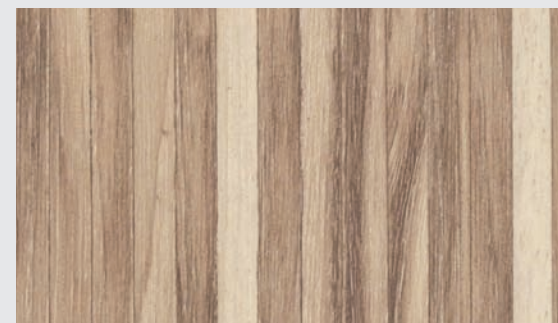
DW307

오크
OAK



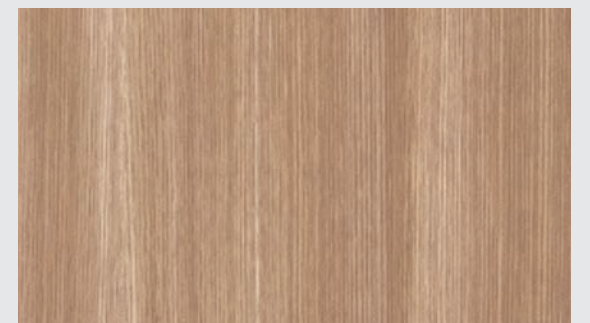
CW609

왈넛
WALNUT



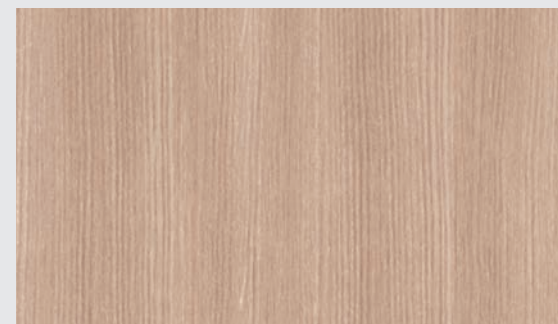
CW612

스크랩우드
SCRAP
WOOD



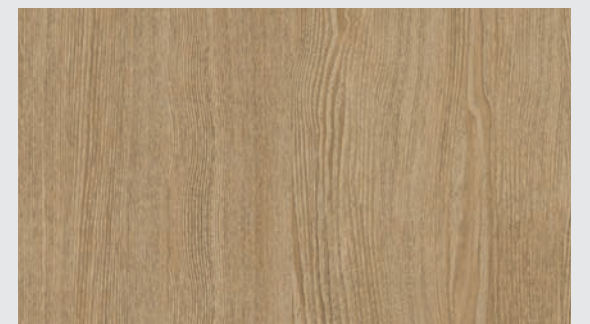
DW159

오크
OAK



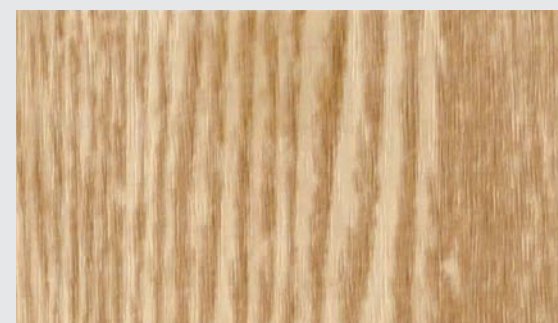
DW549

오크
OAK



CW605

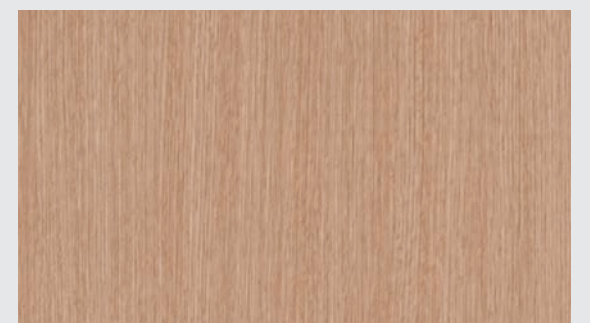
워시드 오크
WASHED
OAK



WWNH6

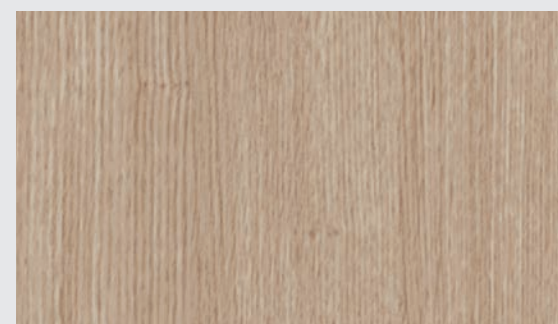
N

애쉬
ASH



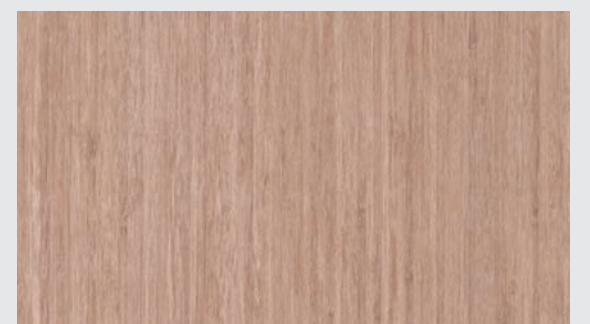
DW308

오크
OAK



CW175

오크
OAK



CW441

밤부
BAMBOO



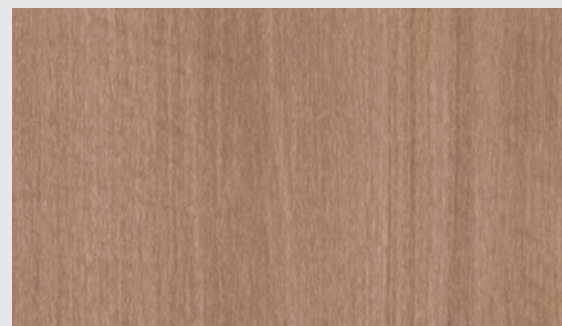
CW534

오크
OAK



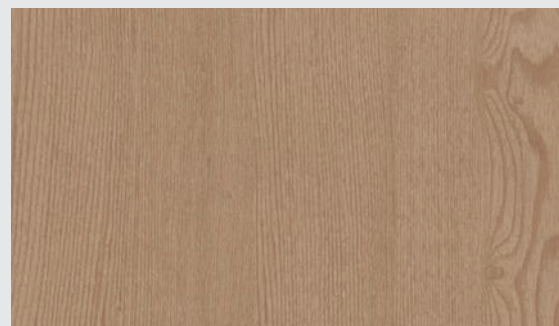
CW314

애쉬
ASH



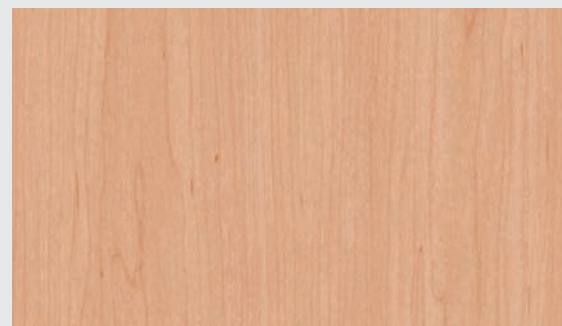
CW512

티크
TEAK



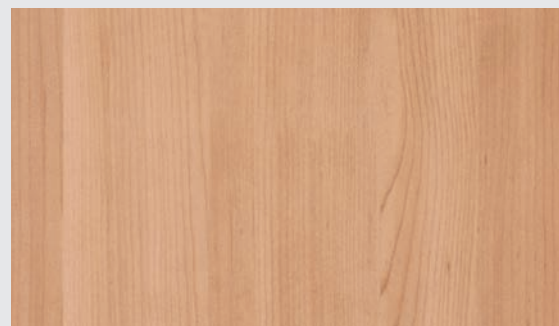
DW576

애쉬
ASH



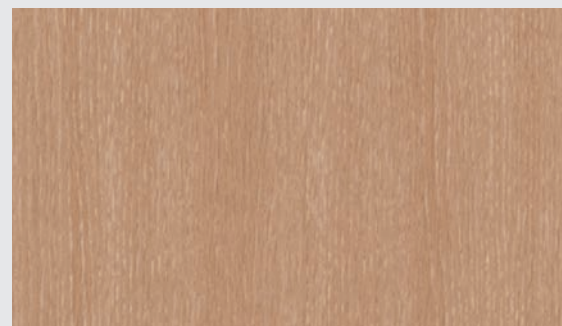
CW079

메이플
MAPLE



DW157

메이플
MAPLE



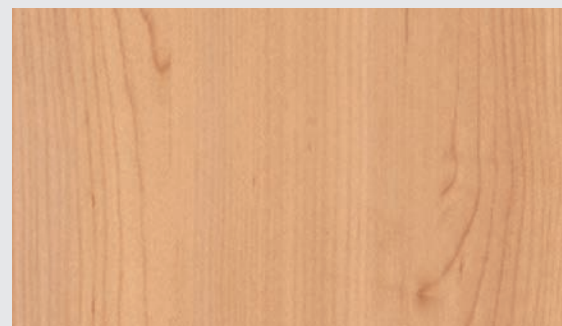
CW258

오크
OAK



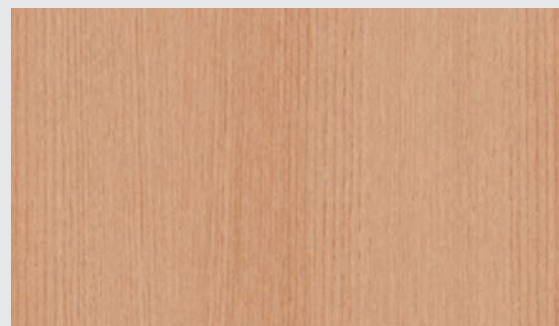
DW550

오크
OAK



DW156

메이플
MAPLE



CW154

티크
TEAK



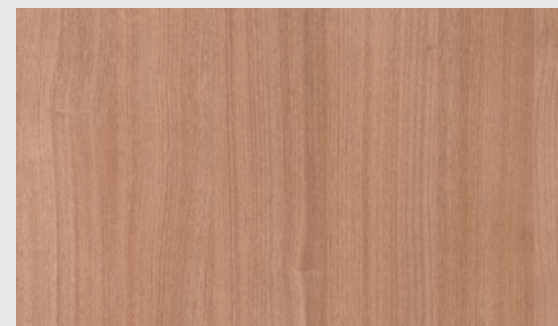
CW427

노체
NOCE



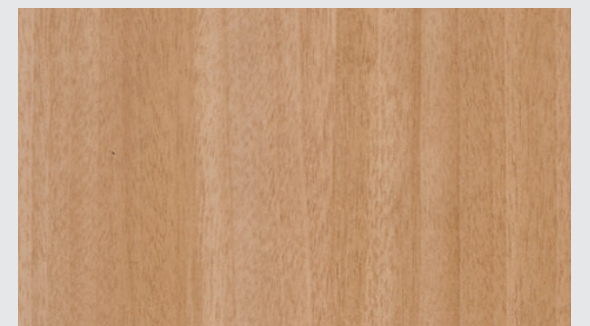
CW090

시카모아
SYCAMORE



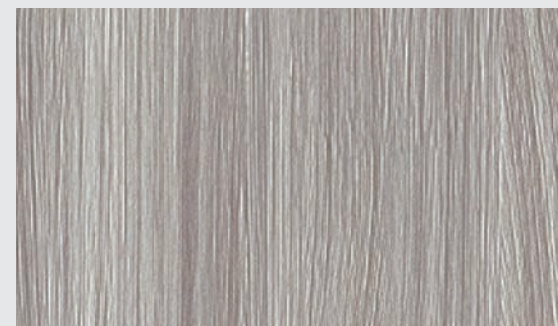
CW455

노체
NOCE



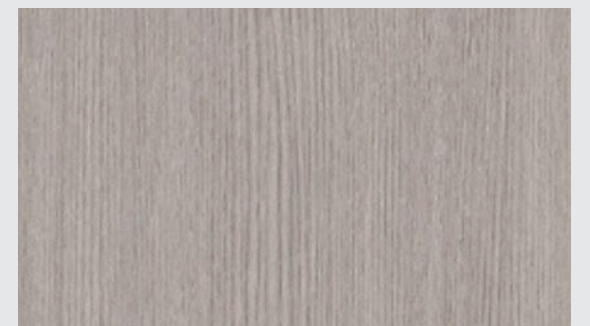
CW588

월넛
WALNUT



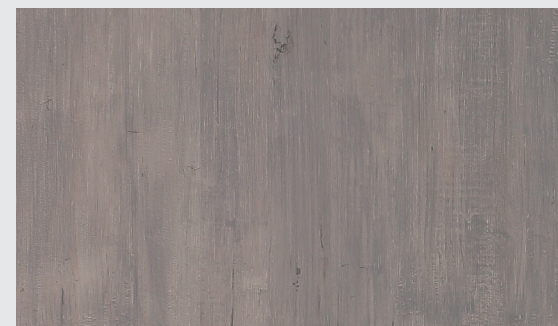
CW459

씬윈
THINWIN



CW510

엘름
ELM



CW620

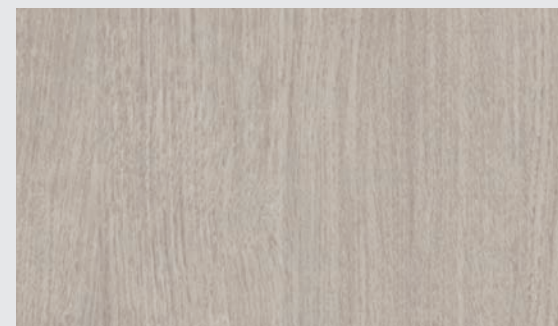
N

페인티드 우드
PAINTED
WOOD



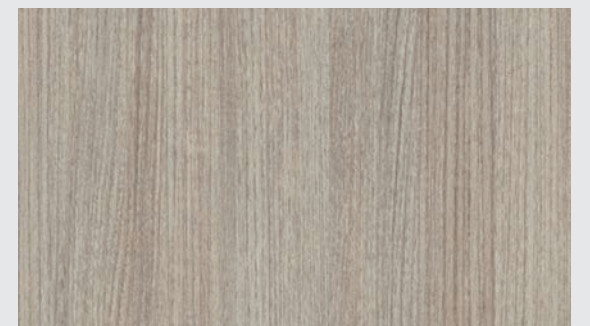
CW607

스탬프 우드
STAMP
WOOD



CW556

오크
OAK



DW388

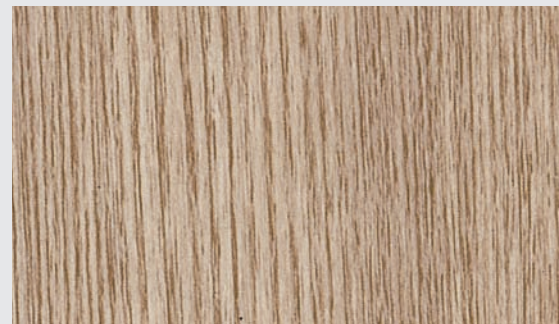
티크
TEAK



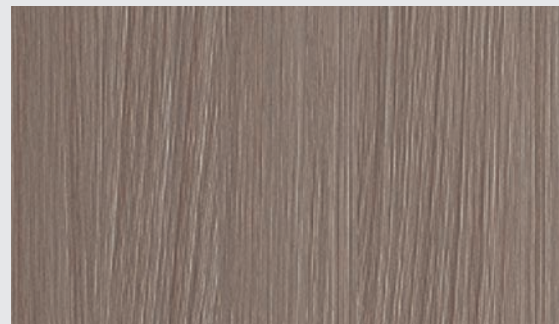
CW619
N
 오크
 OAK



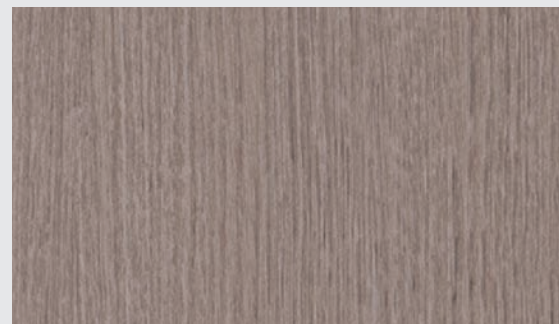
CW555
 버치
 BIRCH



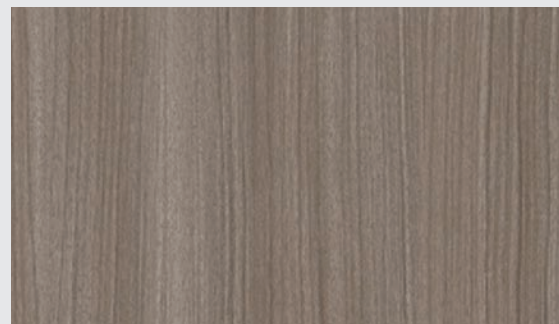
CW601
 애쉬
 ASH



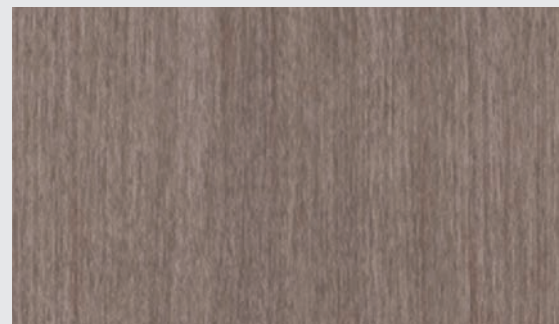
CW460
 씬윈
 THINWIN



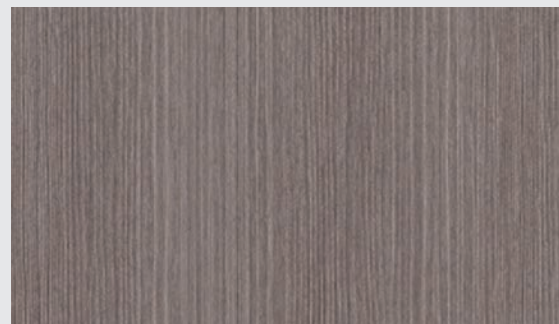
CW292
 오크
 OAK



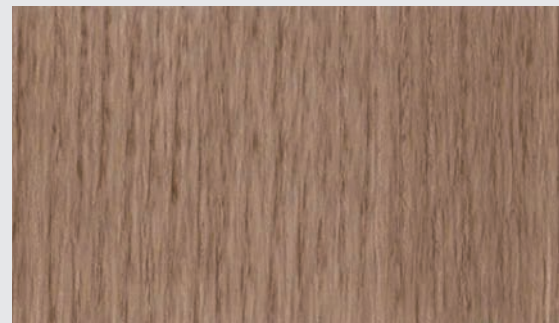
DW456
 티크
 TEAK



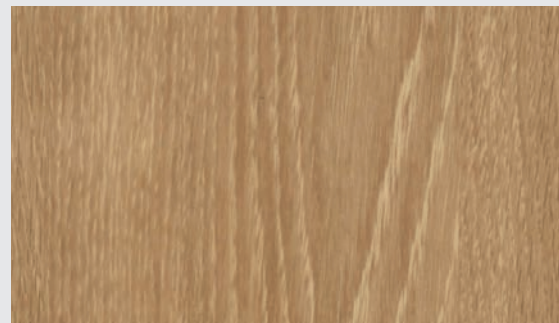
CW431
 월넛
 WALNUT



CW407
 위자드 그레인
 WIZARD
 GRAIN



CWAC1
N
 오크
 OAK



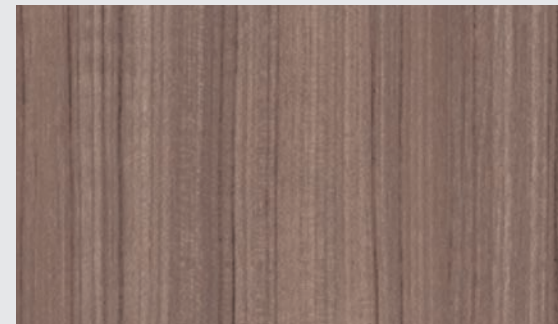
CWSH2
 오크
 OAK



CW581
 티크
 TEAK



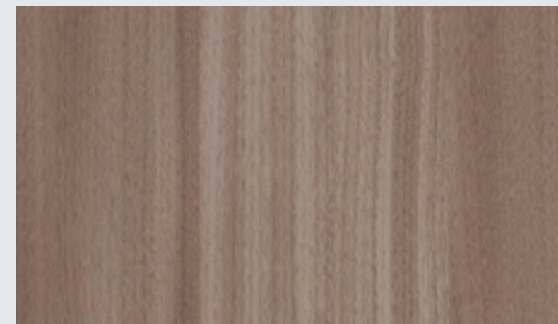
CW370
 티크
 TEAK



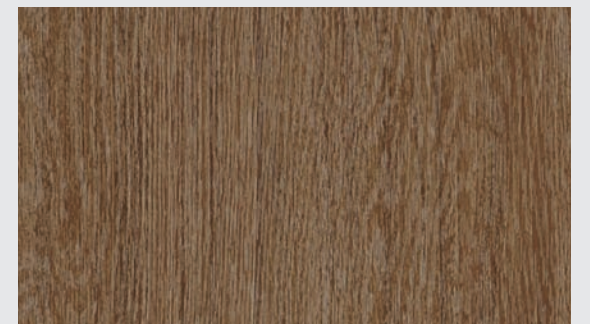
CW384
 티크
 TEAK



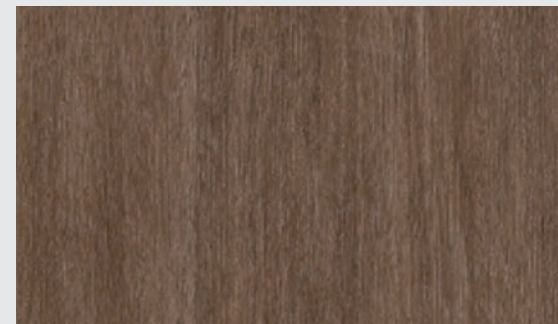
CW610
 스탬프 우드
 STAMP
 WOOD



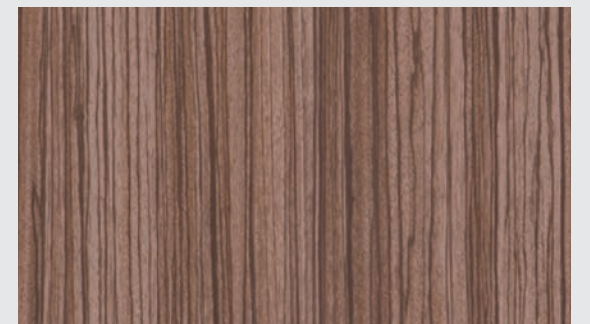
CW452
 노갈 테루엘
 NOGAL
 TERUEL



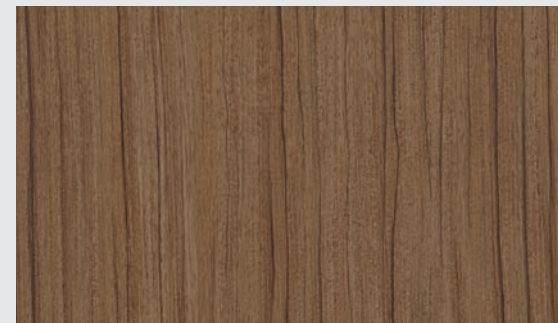
CW582
 티크
 TEAK



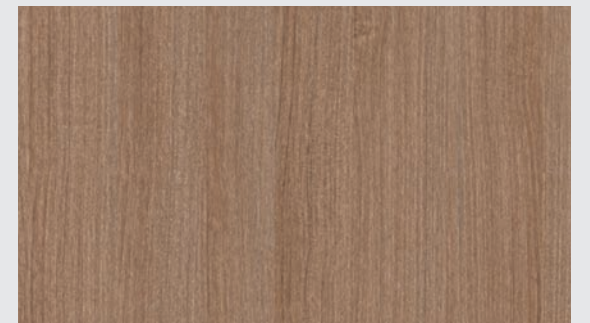
CW469
 패독
 PADOUK



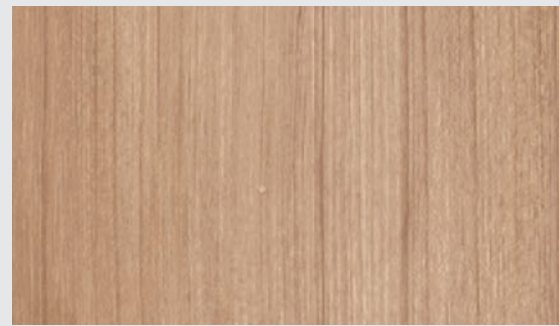
CW320
 지브라노
 ZEBRANO



CW579
 바오
 BAO

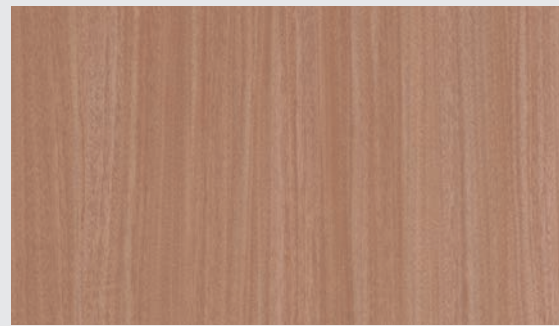


CW554
 버치
 BIRCH



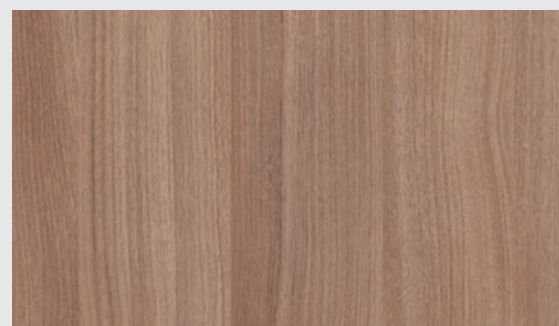
DW179

티크
TEAK



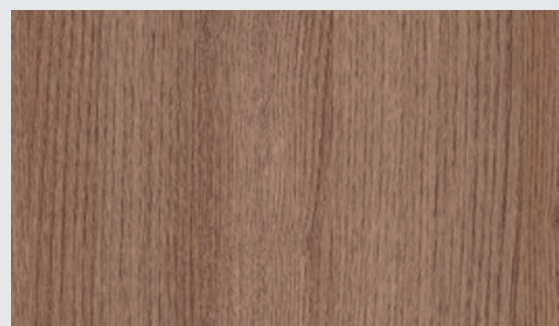
DW350

애니그레
ANEGRE



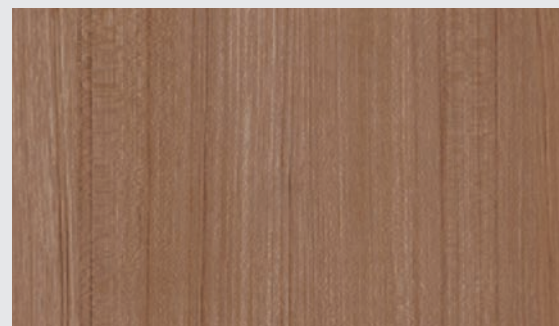
CW454

노체
NOCE



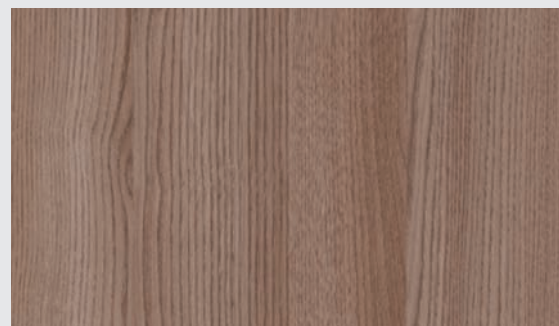
CW535

오크
OAK



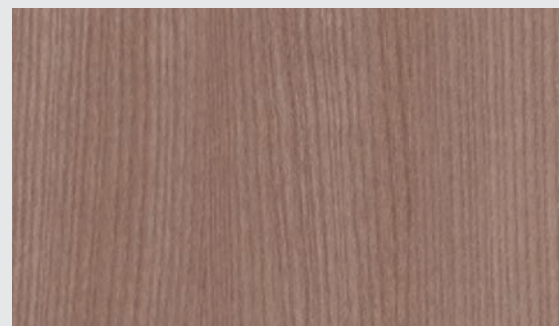
DW180

티크
TEAK



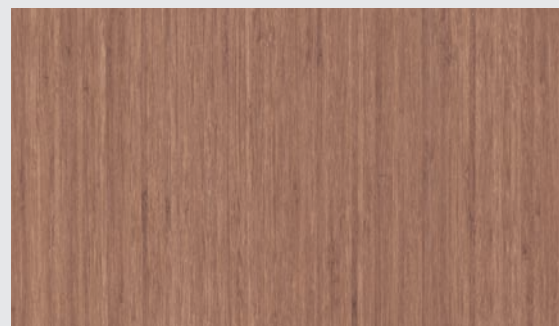
CW359

캐스타노
카두치
CASTAGNO
CARDUCCI



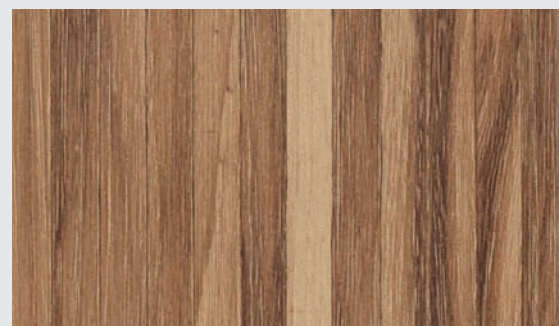
CW211

애쉬
ASH



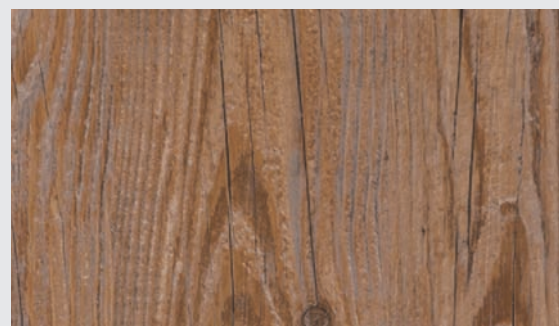
CW442

밤부
BAMBOO



CW613

스크랩우드
SCRAP
WOOD



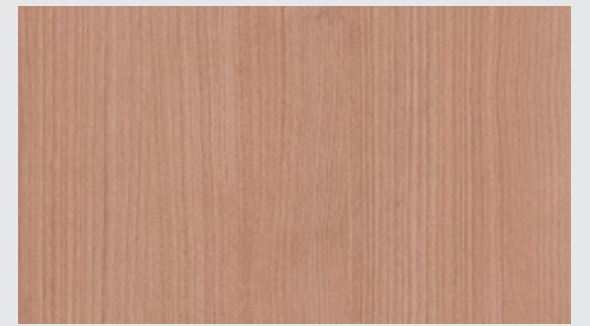
DW400

엔틱 파인
ANTIQUE
PINE



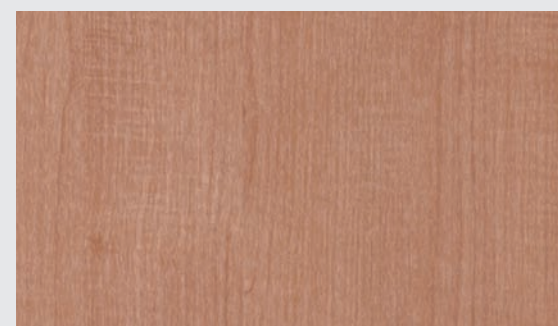
DW398

그린 파인
GREEN
PINE



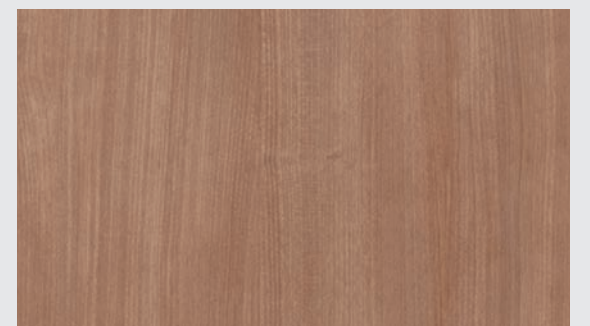
CW439

체리
CHERRY



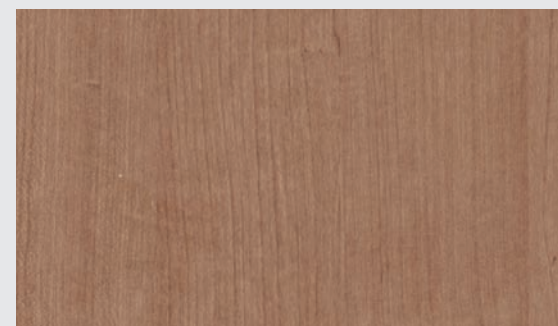
CW529

메이플
MAPLE



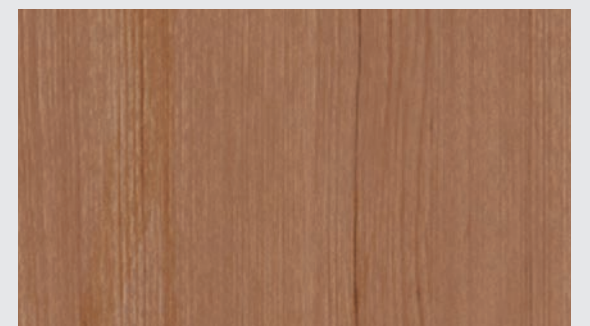
DW181

체리
CHERRY



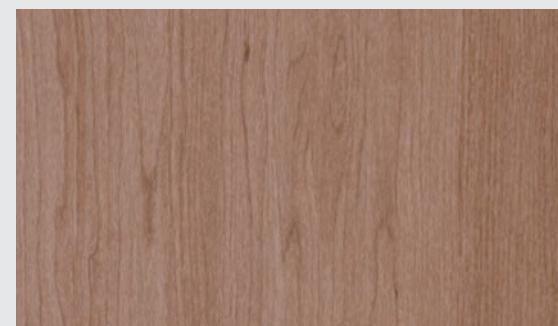
CW130

체리
CHERRY



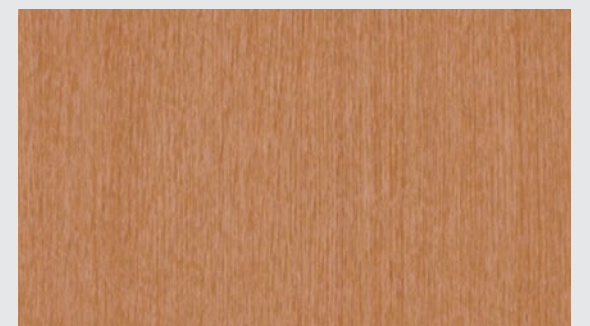
DW195

티크
TEAK



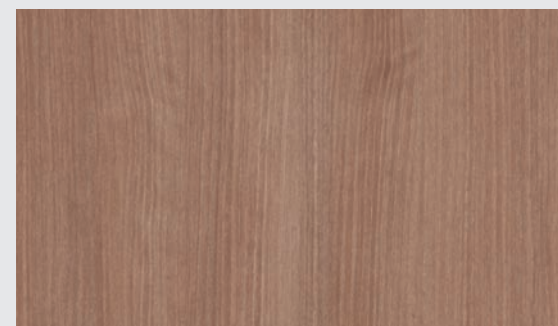
CW124

체리
CHERRY



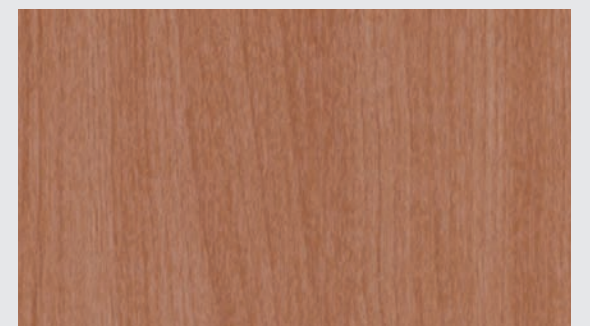
CW057

오크
OAK



DW264

노체
NOCE



CWB1

체리
CHERRY



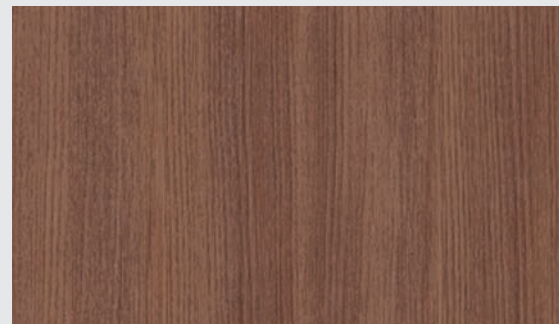
CW432

월넛
WALNUT



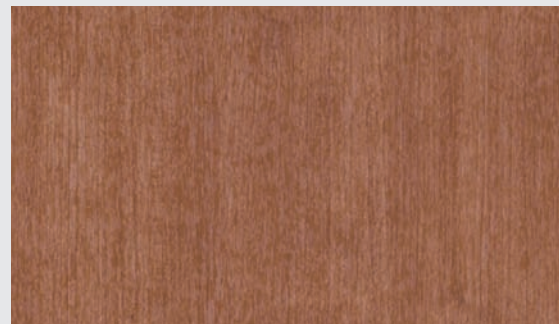
DW269

체리
CHERRY



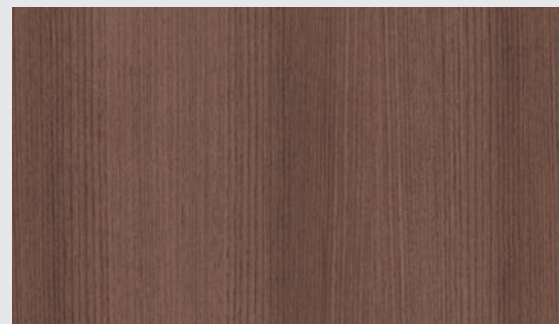
CW551

오크
OAK



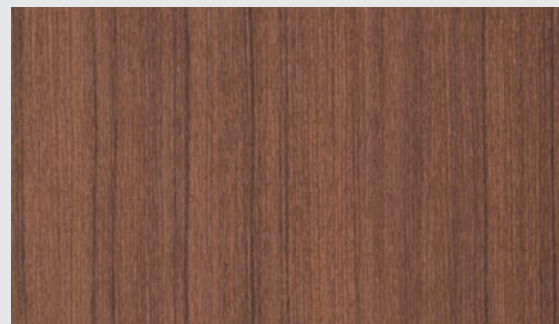
CW111

체리
CHERRY



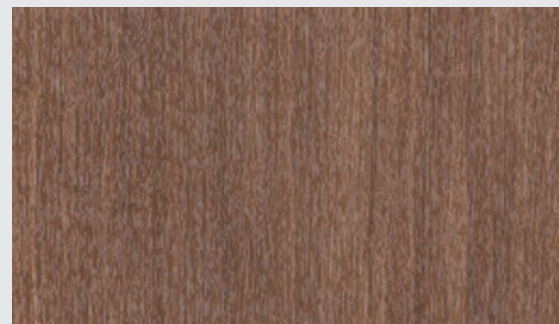
CW150

티크
TEAK



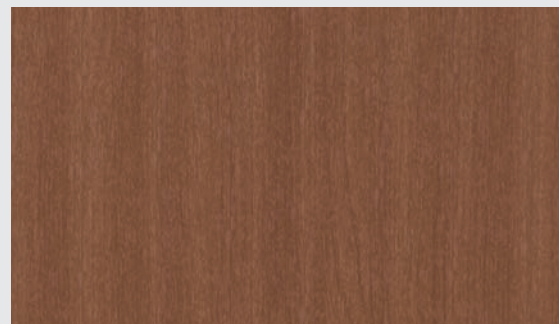
DW354

티크
TEAK



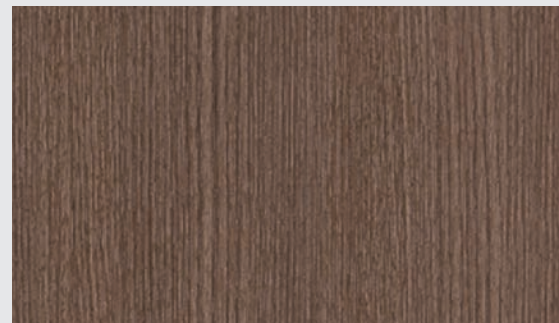
CW513

티크
TEAK



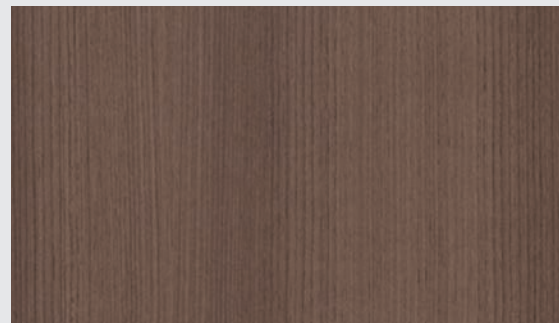
CW046

체리
CHERRY



CW349

로즈우드
ROSE WOOD



CW177

티크
TEAK



DW45

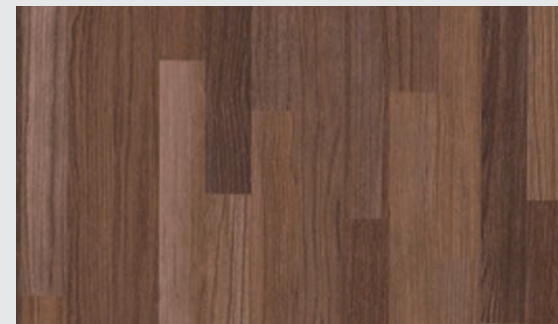
월넛
WALNUT



FWES3

N

월넛
WALNUT



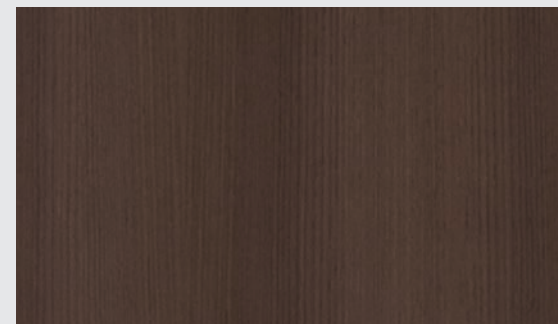
CW404

슬라이스 우드
SLICE
WOOD



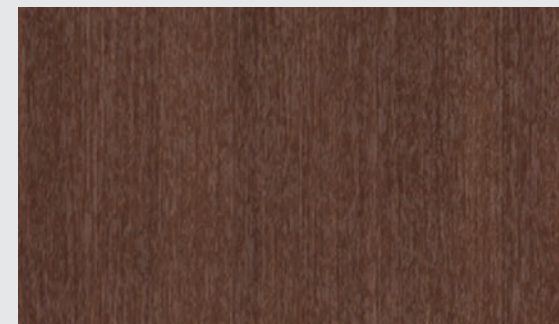
DW190

티크
TEAK



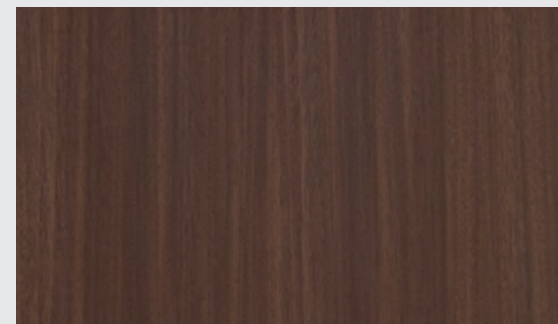
CW153

티크
TEAK



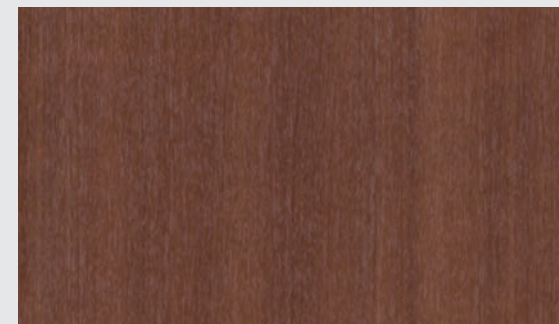
CW044

애니그레
ANEGRE



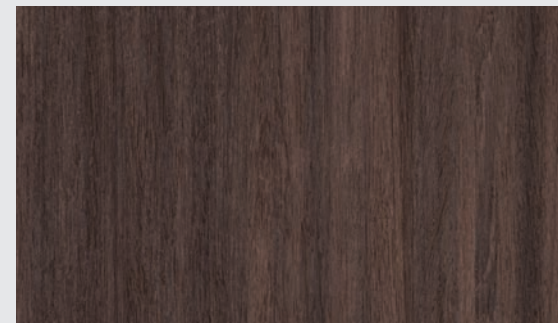
CW351

애니그레
ANEGRE



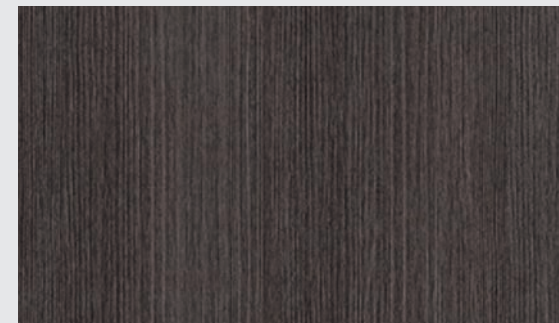
CW069

체리
CHERRY



DW371

티크
TEAK



CW408

위자드 그레인
WIZARD
GRAIN



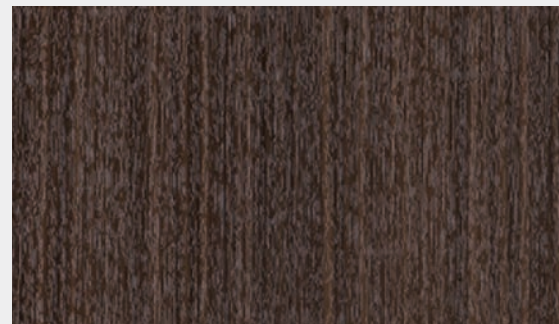
CW466

월넛
WALNUT



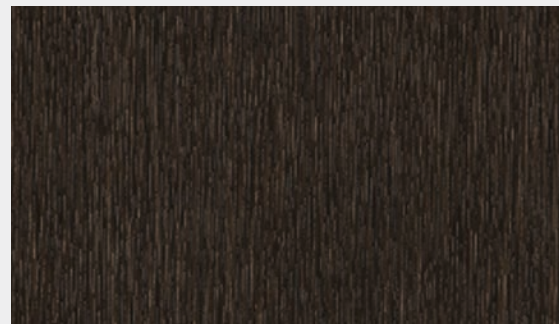
CWES8

N
월넛
WALNUT



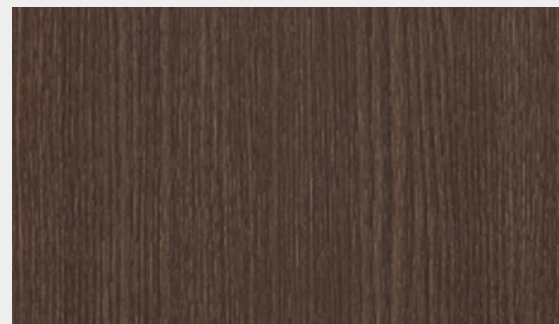
CW364

로즈우드
ROSE WOOD



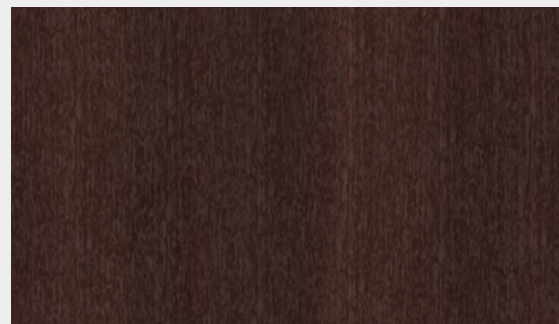
CW356

코코넛
COCONUT



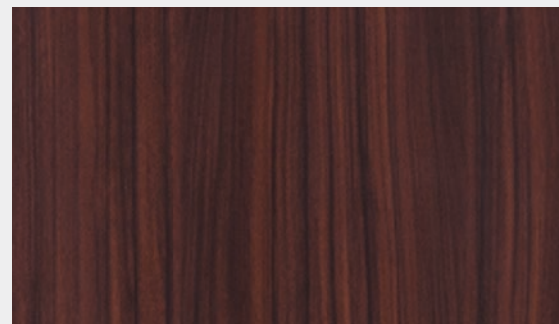
CW348

로즈우드
ROSE WOOD



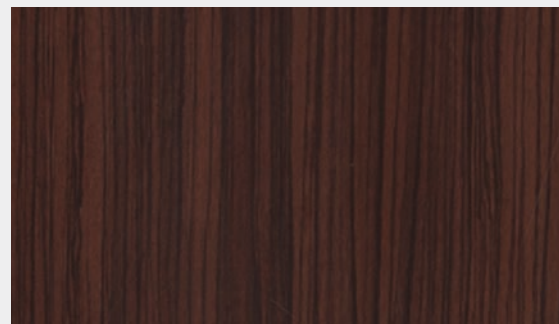
CW087

월넛
WALNUT



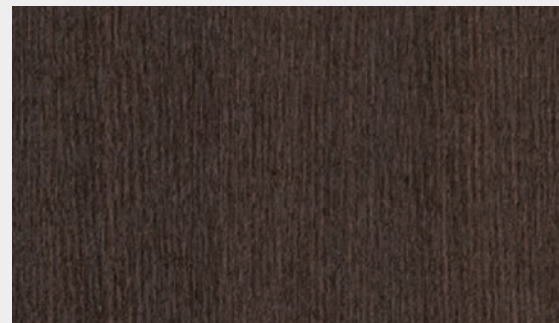
CW362

로즈우드
ROSE WOOD



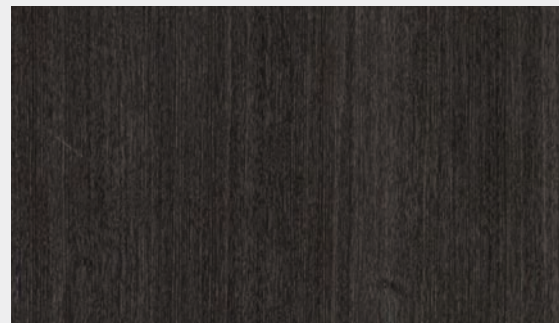
CW321

지브라노
ZEBRANO



CW316

애쉬
ASH



DW467

월넛
WALNUT



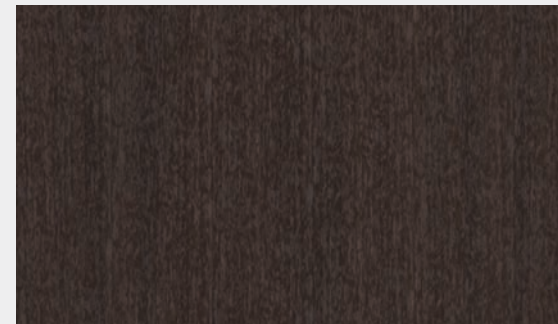
CW155

티크
TEAK



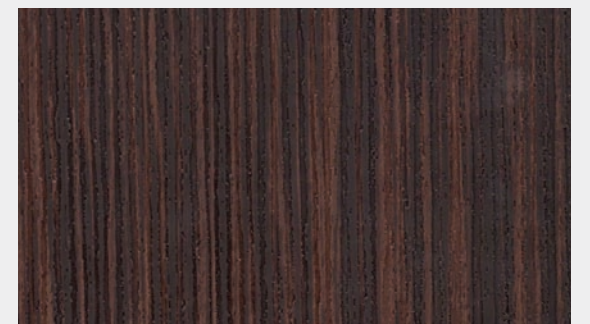
CW330

오크
OAK



CW152

월넛
WALNUT



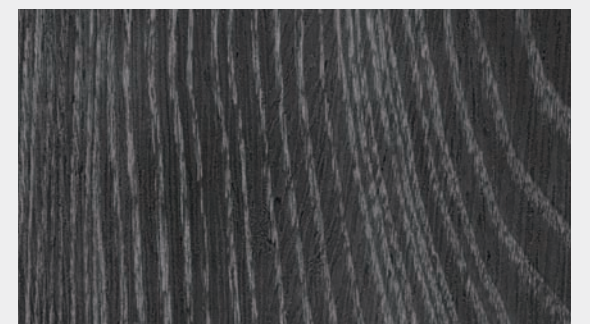
CW614

에보니
EBONY



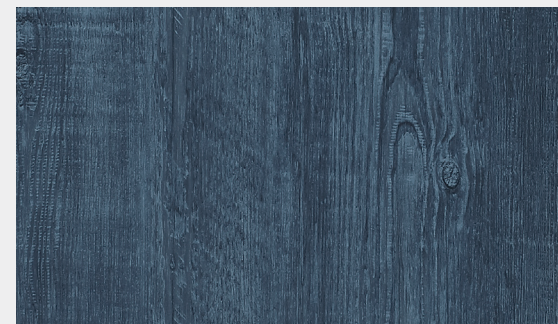
CW088

체리
CHERRY



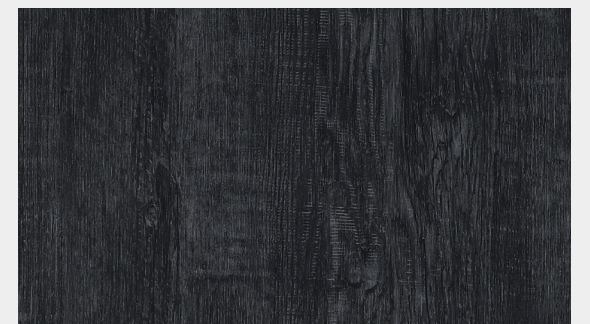
CWESA

다크 애쉬
DARK ASH



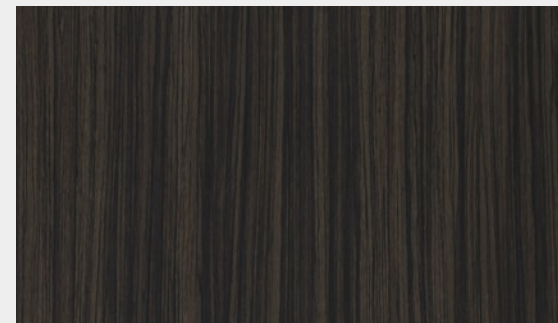
CW622

N
엔틱
페인티드 우드
ANTIQUE
PAINTED
WOOD



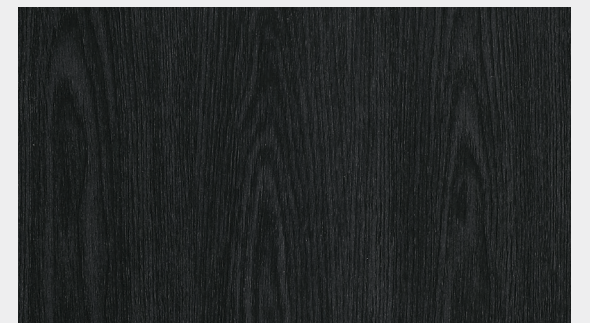
CW623

N
엔틱
페인티드 우드
ANTIQUE
PAINTED
WOOD



CW608

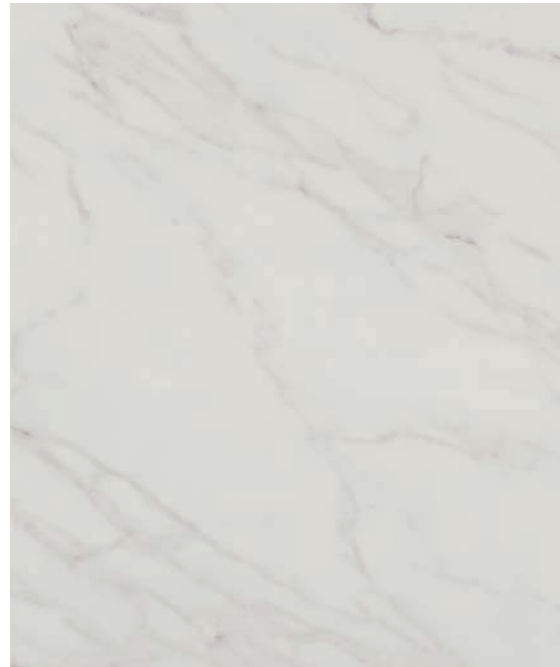
지브라노
ZEBRANO



CW624

N
오크
OAK

DECORATIVE | STONE



ML67
N
비앙코 카라라 (화이트)
BIANCO CARRARA (White)
추상



ML68
N
비앙코 카라라 (베이지)
BIANCO CARRARA (Beige)
추상



ML69
N
비앙코 카라라 (딥 스페이스)
BIANCO CARRARA (Deep Space)
추상



ML67

스톤
STONE

텍스처
TEXTURE

팬시
FANCY

레더
LEATHER

N
신패턴
New



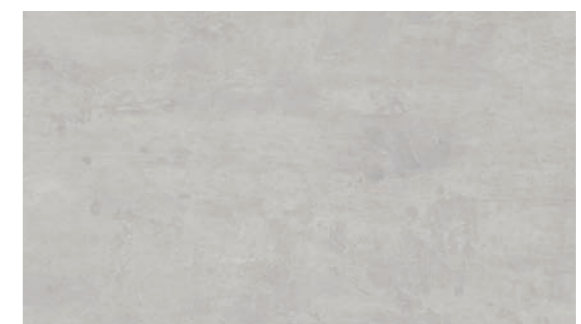
ML55
엔틱 벽돌 (화이트)
ANTIQUE BRICKS (White)
추상



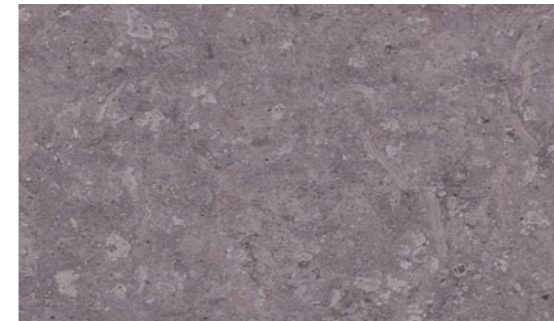
EL178
솔리드 콘크리트 (베이지)
SOLID CONCRETE (Beige)
엘레이나



ML65
N
라임 스톤 (웜 그레이)
LIME STONE (Warm Gray)
추상



EL177
솔리드 콘크리트 (그레이)
SOLID CONCRETE (Gray)
엘레이나



ML66
N
라임 스톤 (딥 퍼플)
LIME STONE (Deep Purple)
추상



EL176
솔리드 콘크리트 (다크 그레이)
SOLID CONCRETE (Dark Gray)
엘레이나



ML67, MP004

DECORATIVE STONE



RM12
대리석
MARBLE
추상



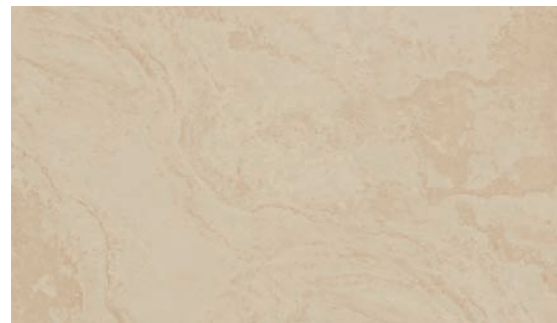
NC014
콘크리트
(웜 그레이)
CONCRETE
(Warm Gray)
네이처 크래프트



RM13
대리석
MARBLE
추상



NC015
콘크리트
(다크 그레이)
CONCRETE
(Dark Gray)
네이처 크래프트



ML23
스톤
STONE
추상



ML24
스톤
STONE
추상



ML25
스톤
STONE
추상



ML25

스톤
STONE

텍스처
TEXTURE

팬시
FANCY

레더
LEATHER

N
신패턴
New



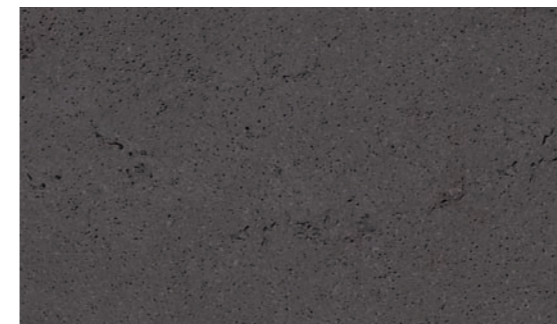
ML56
트라버틴
(화이트)
TRAVERTINE
(White)
추상



ML57
트라버틴
(웜 그레이)
TRAVERTINE
(Warm Gray)
추상



EL238
네추럴 스톤
(라이트 그레이)
NATURAL
STONE
(Light Gray)
엘레이나



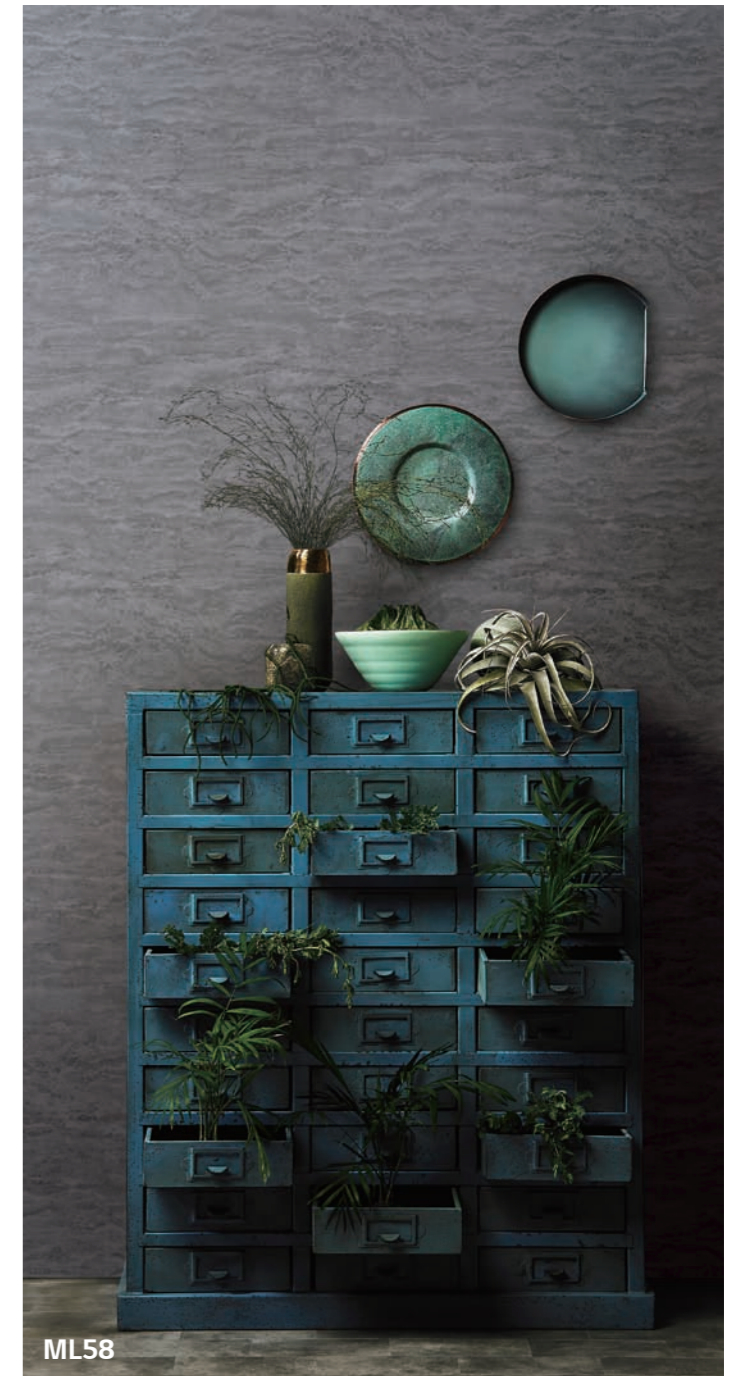
EL213
네추럴 스톤
(웜 그레이)
NATURAL
STONE
(Warm Gray)
엘레이나



EL215
네추럴 스톤
(다크 그레이)
NATURAL
STONE
(Dark Gray)
엘레이나



ML58
트라버틴
(다크 그레이)
TRAVERTINE
(Dark Gray)
추상



ML58

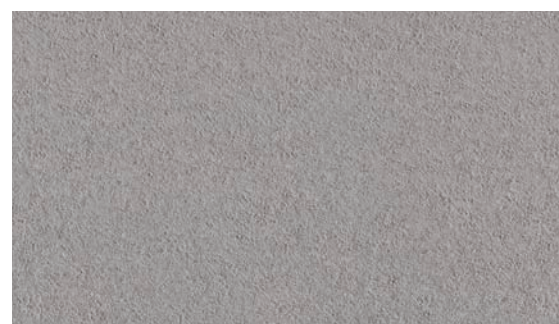
DECORATIVE | STONE / TEXTURE



ML59
N
 리얼 콘크리트 (라이트 그레이)
 REAL CONCRETE (Light Gray)
 —
 추상



ML41
 회벽(아이보리)
 PLASTERED WALL (Ivory)
 —
 추상



ML60
N
 리얼 콘크리트 (웜 그레이)
 REAL CONCRETE (Warm Gray)
 —
 추상



ML42
 회벽 (그레이 베이지)
 PLASTERED WALL (Gray Beige)
 —
 추상



ML61
N
 리얼 콘크리트 (다크 그레이)
 REAL CONCRETE (Dark Gray)
 —
 추상



ML43
 회벽 (다크 그레이)
 PLASTERED WALL (Dark Gray)
 —
 추상



ML43

스톤
STONE

텍스처
TEXTURE

팬시
FANCY

레더
LEATHER

N
신패턴
New



ML62
N
 회벽 브러쉬 (라이트 그레이)
 PLASTERED WALL BRUSH (Light Gray)
 —
 추상



NL009
 네추럴 스트라이프 (크림)
 NATURAL STRIPE (Cream)
 —
 네오지오



ML63
N
 회벽 브러쉬 (쿠거 브라운)
 PLASTERED WALL BRUSH (Cougar Brown)
 —
 추상



ML64
N
 회벽 브러쉬 (쿨 그레이)
 PLASTERED WALL BRUSH (Cool Gray)
 —
 추상



ML62, ML63



EV114



ML20

러스틱 브론즈
RUSTIC
BRONZE
추상



ML19

러스틱 브론즈
RUSTIC
BRONZE
추상



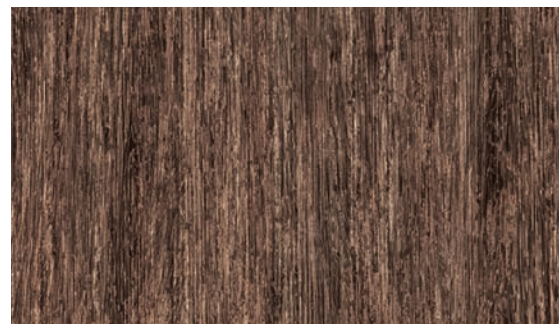
ML22

러스틱 브론즈
RUSTIC
BRONZE
추상



EV113

러스틱 메탈
(브론즈)
RUSTIC
METAL
(Bronze)
엘레이나



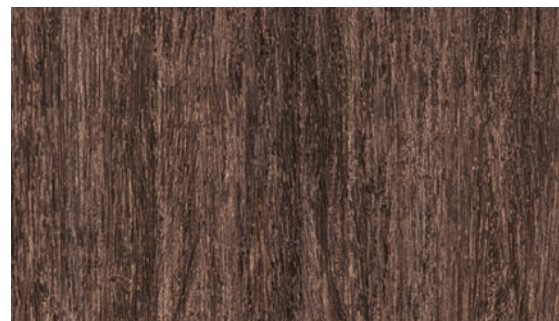
EV080

럭셔리 우드
LUXURY
WOOD
엘레이나



EV114

러스틱 메탈
(모스 그린)
RUSTIC
METAL
(Moss Green)
엘레이나



EV118

스모키 우드
SMOKY
WOOD
엘레이나



EV203

스피드
(옐로우 골드)
SPEED
(Yellow Gold)
엘레이나



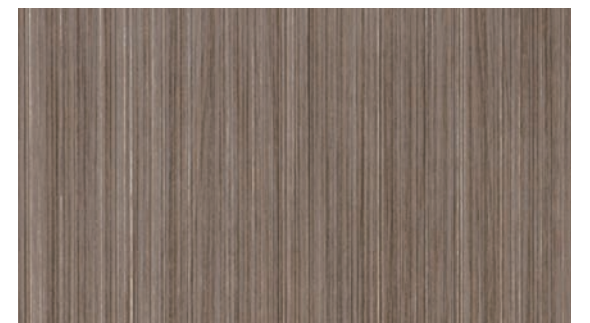
EV079

럭셔리 우드
LUXURY
WOOD
엘레이나



EV206

스파이더
(골드)
SPIDER
(Gold)
엘레이나



EV204

스피드
(세피아)
SPEED
(Sepia)
엘레이나

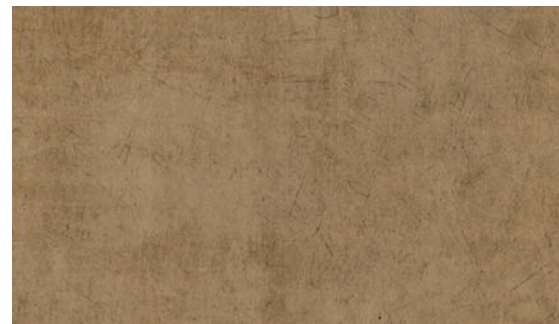


EV203



EV081

텍스처 메탈
(스킨 실버)
TEXTURED
METAL
(Skin Silver)
—
엘레이나



EV083

텍스처 메탈
(패일 골드)
TEXTURED
METAL
(Pale Gold)
—
엘레이나



EV119

스모키 우드
SMOKY
WOOD
—
엘레이나



EL225

포레스트
FOREST
—
엘레이나



EL226

포레스트
FOREST
—
엘레이나



EL227

포레스트
FOREST
—
엘레이나



EV083

스톤
STONE

텍스처
TEXTURE

팬시
FANCY

레더
LEATHER

N

신패턴
New



EL092



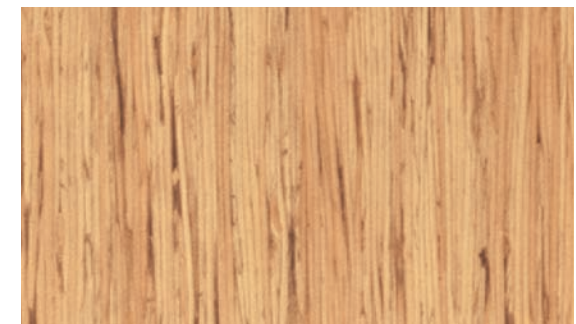
EL092

스트라이프 퍼즐
(레인보우 블루)
STRIPE PUZZLE
(Rainbow Blue)
—
엘레이나



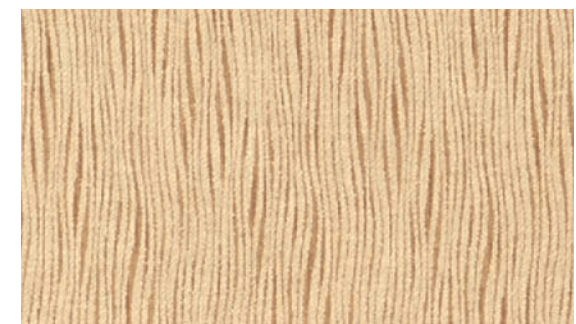
EL091

스트라이프 퍼즐
(레인보우 레드)
STRIPE PUZZLE
(Rainbow Red)
—
엘레이나



EL194

스타일 밤부
(아이보리)
STYLE
BAMBOO
(Ivory)
—
엘레이나



EL197

헤이즈(베이지)
HAZE
(Beige)
—
엘레이나



EL209

파인 큐빅
(레드 브라운)
PINE CUBIC
(Red Brown)
—
엘레이나



EL199

헤이즈
(웜 그레이)
HAZE
(Warm Gray)
—
엘레이나

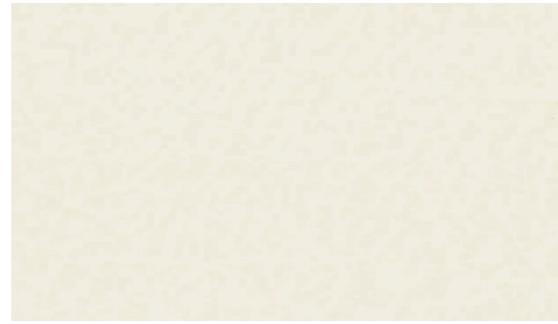
DECORATIVE LEATHER



NL004

가죽 격자
CROSS
STRIPE

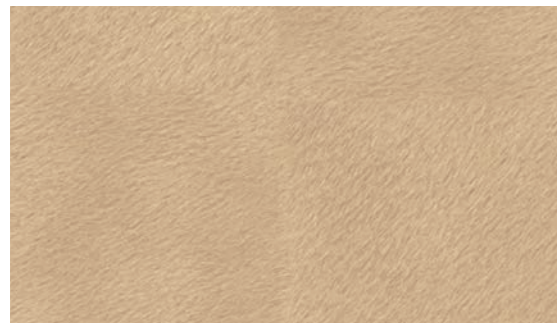
네오지오



ML31

가죽
LEATHER

추상



EL139

칼프(베이지)
CALF
(Beige)

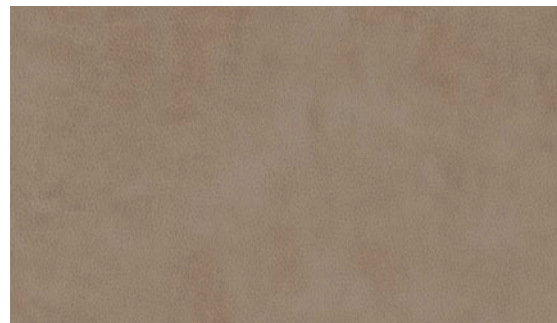
엘레이나



NL007

나선 무늬
SPIRAL

네오지오



ML13

가죽
LEATHER

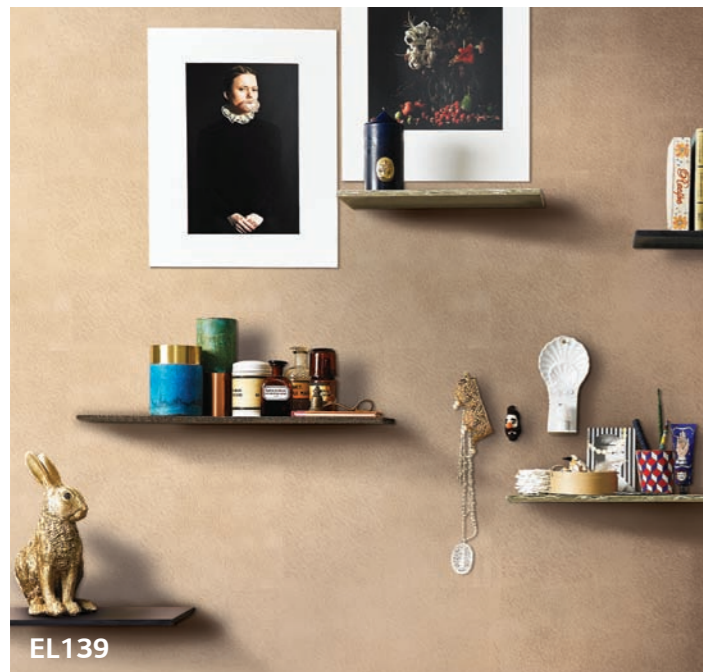
추상



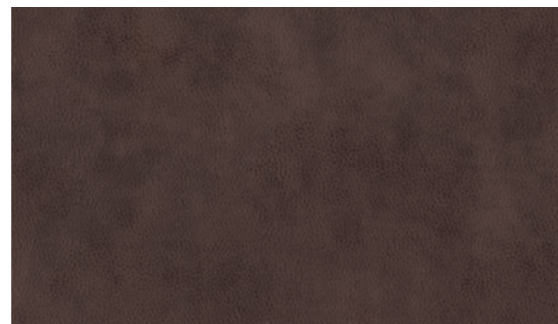
NL008

나선 무늬
SPIRAL

네오지오



EL139



ML14

가죽
LEATHER

추상



EL140

칼프(카멜)
CALF
(Camel)

엘레이나



NEW
PROPOSAL



MOLDING &
DOOR



OUTDOOR



GLASS

MOLDING & DOOR

LG Hausys Molding & Door color is composed of natural wood and bright primary color, suggesting a comfortable and pleasant space that is bright and minimal, present residential trend.



RS116



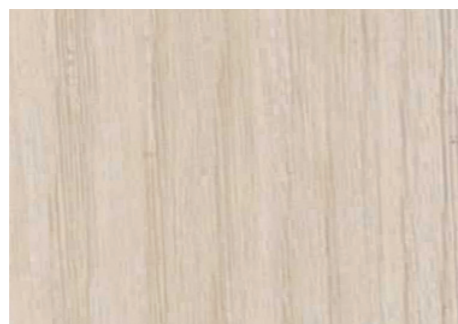
RS104



RS105



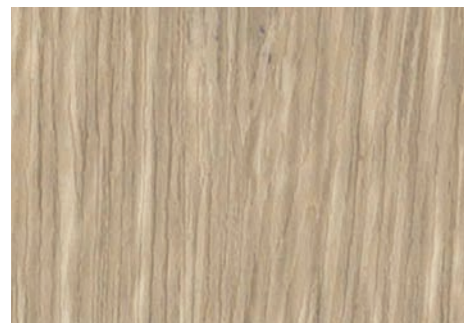
CW611



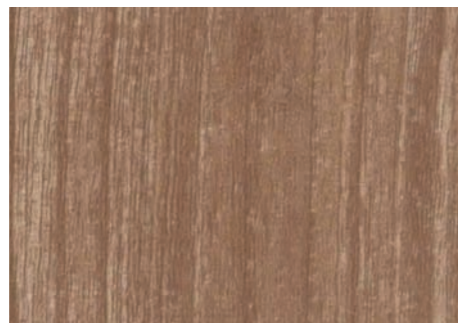
CW625 N



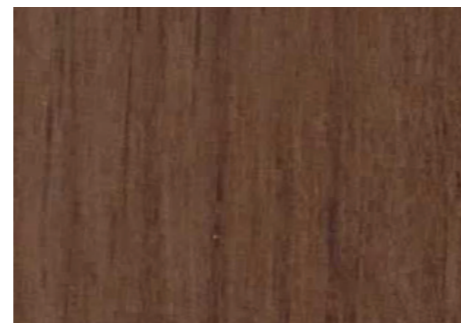
CW626 N



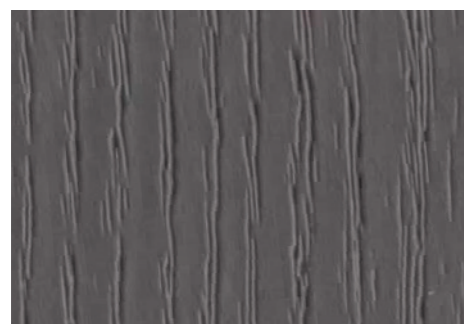
CWPf3



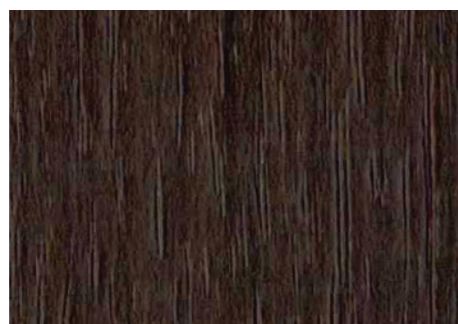
CW617



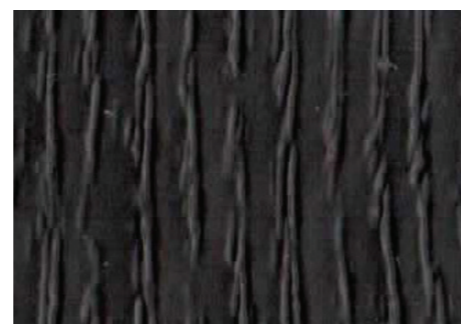
CW628 N



RS129 N



CW627 N



RS117

몰딩 & 도어
MOLDING & DOOR

옥외용
OUTDOOR

유리창용
WINDECO

유리창용
ART CANVAS

N

신패턴
New



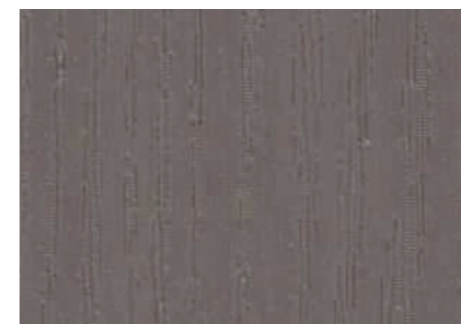
RGM05 N



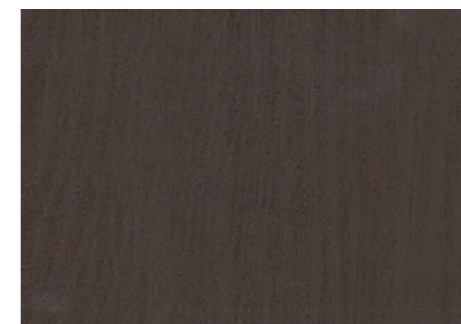
RGM03 N



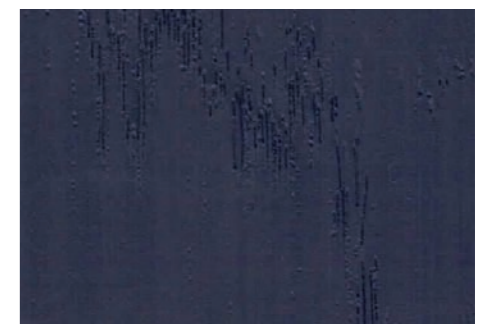
RGM04 N



RGM02 N



RGM01 N



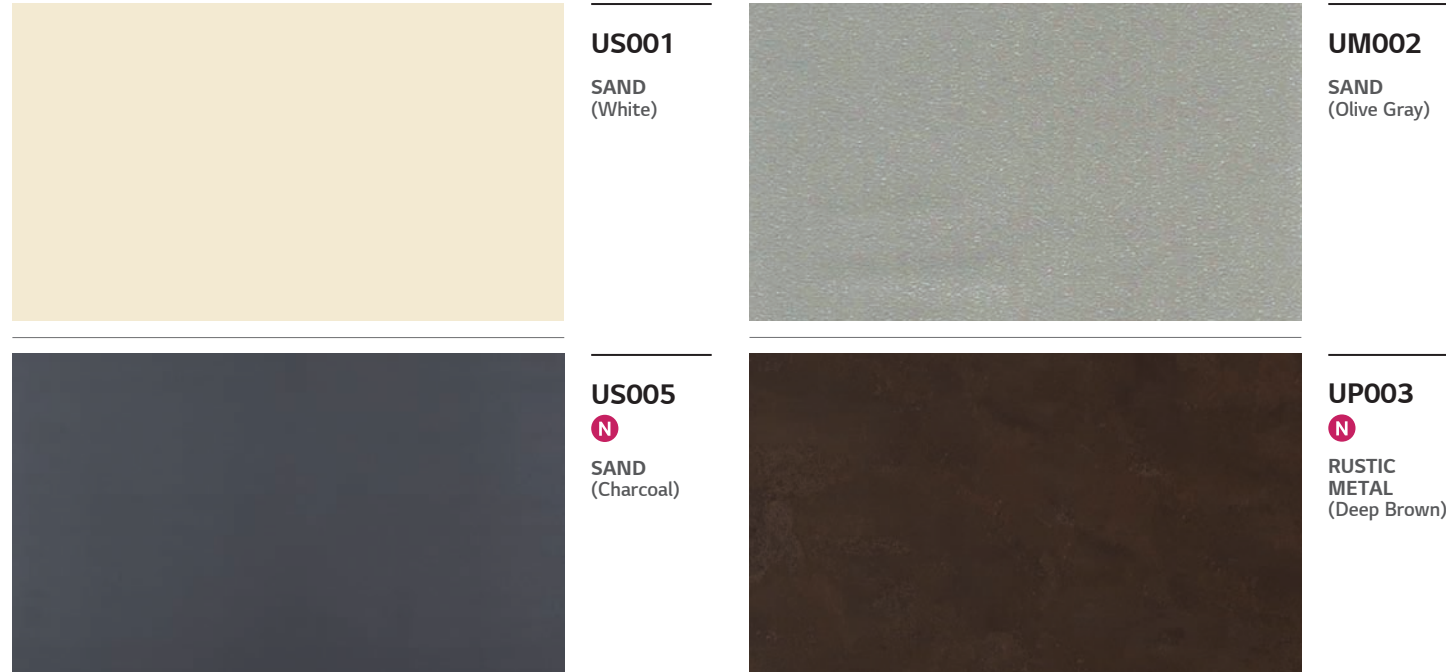
RGM06 N



RGM01, RS117

OUTDOOR

OUTDOOR series is for surface finishing materials to decorate building exterior including windows, panels, doors and others. It acquires the RAL quality certification of Germany for the first time as an Asian country, which products are suitable for severe outdoor conditions of UV rays, humidity and others.



몰딩 & 도어
MOLDING & DOOR

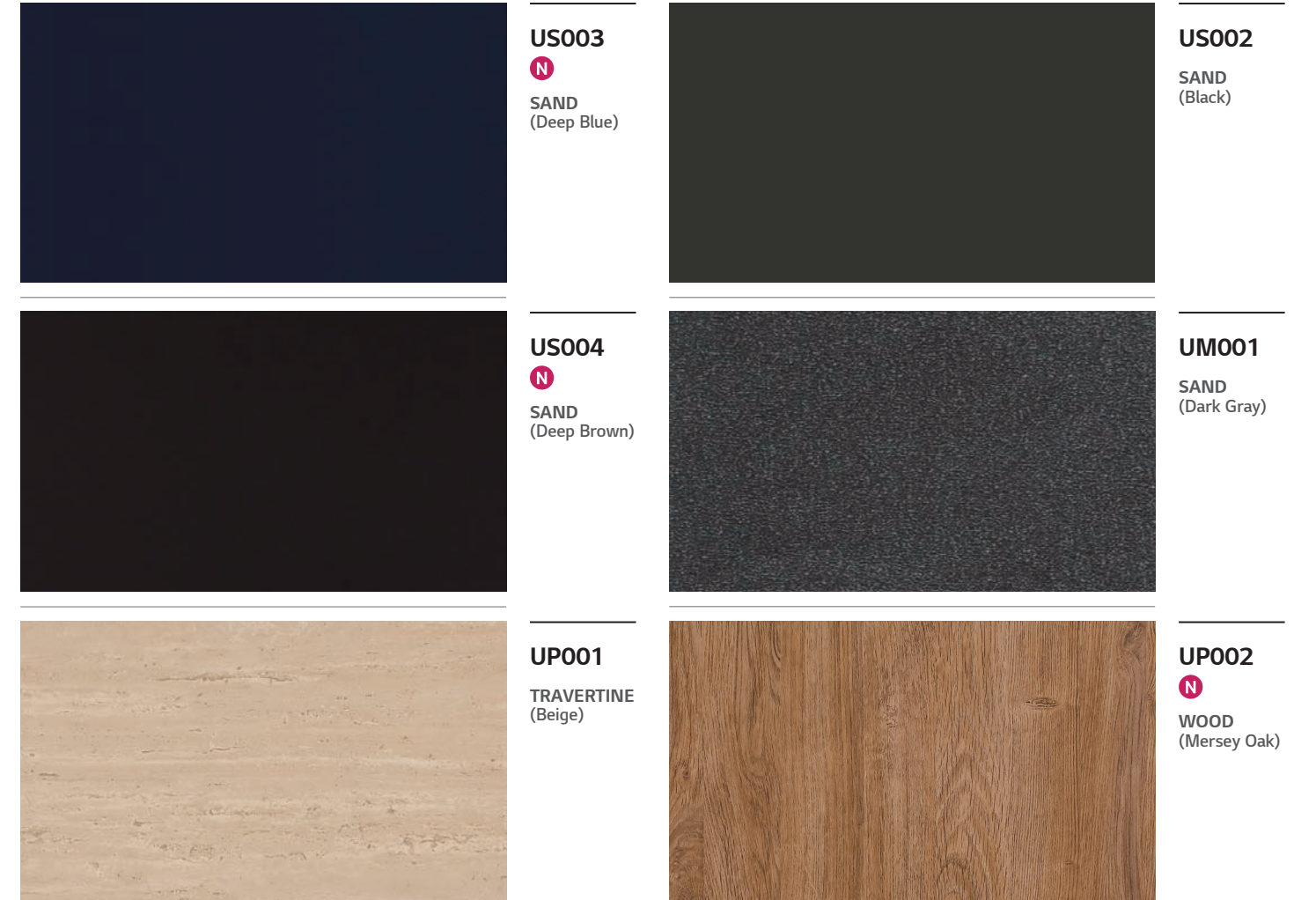
옥외용
OUTDOOR

유리창용
WINDECO

유리창용
ART CANVAS

N

신패턴
New



LG Hausys Windeco Film is a PVC-based graphic film characterized by its pearl finishes and embossed patterns reflecting the company's outstanding technology. It also allows users to customize the designs by adding patterns through digital printing. Add a new decorative dimension to your spaces using LG Hausys Windeco Film.

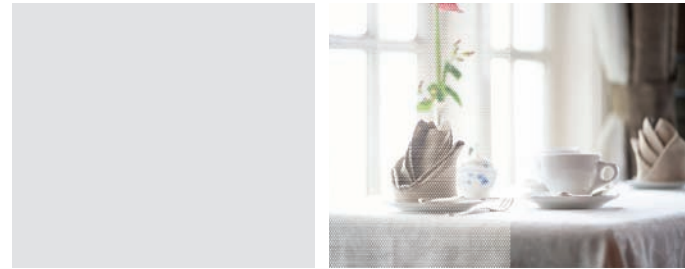
Glass Etched		LC5510 Deep Silver — PVC 90 μ m	Fog		EP115 Fog — PVC 100 μ m
		LC5511 Gold Etched — PVC 90 μ m			LC5520 Fog(Clear) — PVC 130 μ m
		LC5560 Silver — PVC 90 μ m			LC5521 Fog(Milky) — PVC 130 μ m
		LC5580 Light Silver — PVC 90 μ m			LC5522 Fog(Brown) — PVC 130 μ m
Mosaic		LC5540 Mosaic (Square) — PVC 130 μ m	Milky		LC4550 Light Milky — PVC 80 μ m
		LC5550 Mosaic (Cube) — PVC 130 μ m			LC5570 Milky — PVC 90 μ m
			Diamond		LA8082N Sparkling Diamond — PVC 75 μ m

LG Hausys ART Canvas is a versatile product made of PET materials in classy designs ideal for diverse spaces for relaxation, living, and work. Also it is safe to use as it is designed to block UV rays and prevent glass from scattering. Bring elegance to your spaces using LG Hausys Art Canvas.

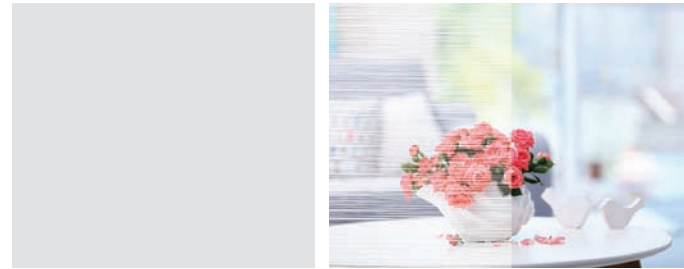
	LC5601 Dot Gradation — PET 50 μ m		LC5603 Stripe Gradation — PET 50 μ m
	LC5602 Small Dot Gradation — PET 50 μ m		LC5604 Small Stripe Gradation — PET 50 μ m

LC5601

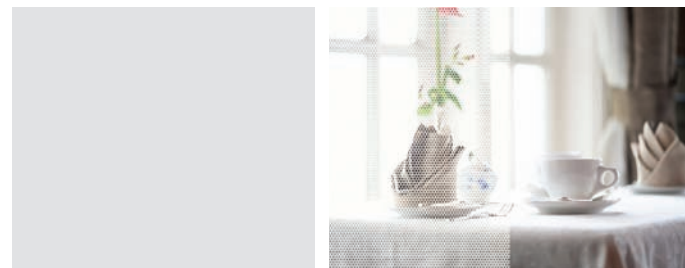
LC5603



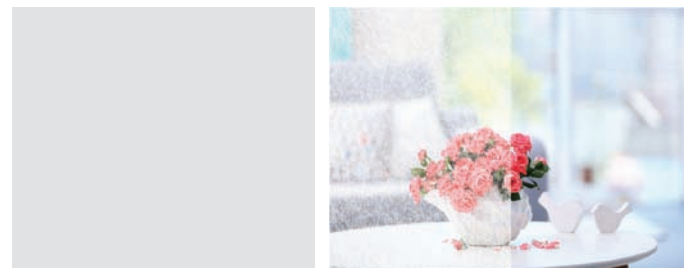
LC5605 _ Dot PET 50 μ m



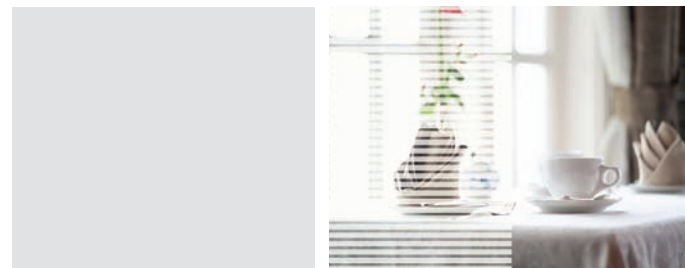
LC5609 _ String PET 50 μ m



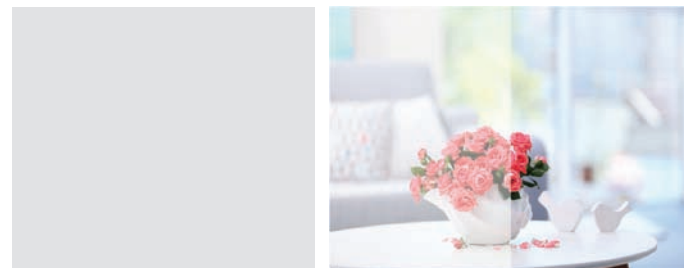
LC5606 _ Negative Dot PET 50 μ m



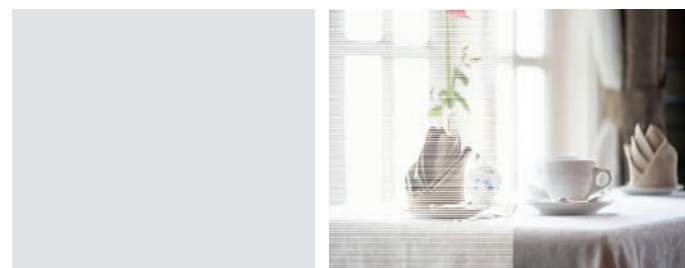
LC5610 _ Hanji PET 50 μ m



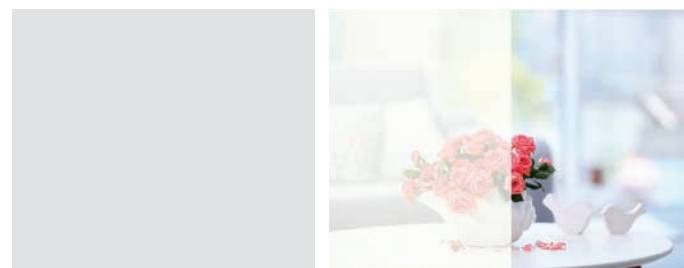
LC5607 _ Stripe PET 50 μ m



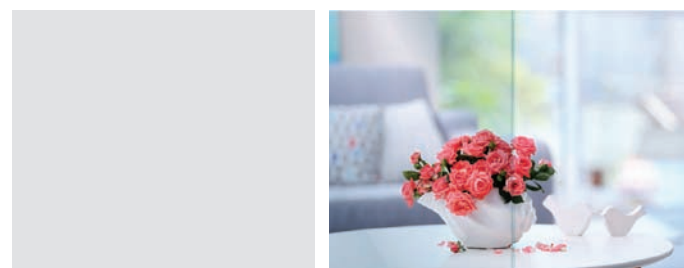
LC5611 _ Gloss Milky PET 50 μ m



LC5608 _ Small Stripe PET 50 μ m



LC5612 _ Matte Milky PET 50 μ m



LC5613 _ Clear PET 50 μ m

ANTI-SCATTERING

- Test Method : JIS A 5759
- Anti-scattering function prevents the secondary accident caused by pieces of broken glass in the event of sudden glass breakage.



UV-CUT

- UV blocking ratio > 99% blocks harmful UV rays from daily life and prevents pigmentation, freckles, and skin aging.

SCRATCH RESISTANCE

- Surface strength has been improved through surface hard coating. (Scratch hardness > 2H)
- Contaminant resistant is outstanding. (No strain remained after alcohol cleaning of contaminant by oily marker that was neglected for 1 day.)

PRIVACY PROTECTION

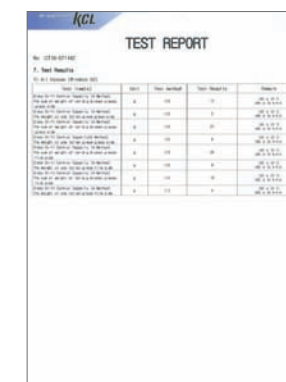
- Blocking view from outside to protect personal privacy

PROPERTY

Pattern	Film	Thickness (With Adhesive)	Peel Adhesion (kgf/in)	SHGC	U Value (Kcal/m ² h ² C)	Shading Coefficient	Solar Heat			Visible Light		UV Block (%)	Anti Scattering (JIA A 5759)
							Reflection (%)	Transmittance(%)	Absorbance(%)	Reflection (%)	Transmittance(%)		
Gradation	LC5601	70 μ m	>1Kg	0.48	App5.9	0.55	18%	33%	49%	27%	22%	>99	0
	LC5602	70 μ m	>1Kg	0.44	App5.9	0.51	18%	27%	55%	28%	11%	>99	0
	LC5603	70 μ m	>1Kg	0.40	App5.9	0.46	20%	22%	58%	32%	23%	>99	0
	LC5604	70 μ m	>1Kg	0.79	App5.9	0.90	15%	30%	55%	10%	75%	>99	0
Dot	LC5605	70 μ m	>1Kg	0.55	App5.9	0.63	14%	41%	44%	21%	30%	>99	0
	LC5606	70 μ m	>1Kg	0.54	App5.9	0.62	16%	41%	43%	23%	32%	>99	0
Stripe	LC5607	70 μ m	>1Kg	0.38	App5.9	0.44	19%	19%	62%	31%	0.80%	>99	0
	LC5608	70 μ m	>1Kg	0.59	App5.9	0.68	15%	48%	36%	24%	35%	>99	0
Abstract	LC5609	70 μ m	>1Kg	0.71	App5.9	0.82	12%	64%	25%	16%	59%	>99	0
	LC5610	70 μ m	>1Kg	0.47	App5.9	0.54	20%	32%	48%	31%	12%	>99	0
	LC5611	70 μ m	>1Kg	0.36	App5.9	0.42	22%	18%	60%	35%	0.50%	>99	0
Solid	LC5612	70 μ m	>1Kg	0.26	App5.9	0.30	23%	2%	75%	28%	0.90%	>99	0
	LC5613	70 μ m	>1Kg	0.79	App5.9	0.90	9%	73%	18%	10%	75%	>92	0

SC(Shading Coefficient) : A value that determines one type of thermal performance of a glass unit.
SHGC(Solar Heat Gain Coefficient) : The solar energy transmittance of a window or door as a whole, factoring in the glass.
U-Value : The rate of transfer of heat through one square meter of a structure divided by the difference in temperature across the structure.

TEST REPORT_Anti Scattering



INTERIOR FILM REPORT

EUROPE CE CERTIFICATION



LLOYD'S CERTIFICATION OF FIRE APPROVAL



LLOYD'S CERTIFICATION OF MODULE B



AMERICA UL CERTIFICATION



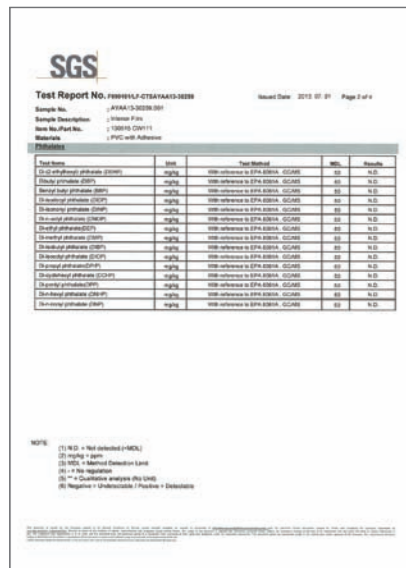
ASTM E-84 TEST REPORT



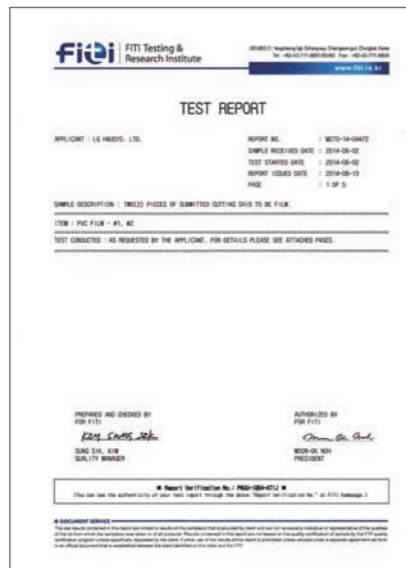
HEAVY METAL TEST REPORT



PHthalate PLASTICIZER TEST REPORT



ANTIBACTERIAL TEST REPORT



Things to be aware of during Interior Film application

1. Before applying

- Do not forget to check out the type and condition of material (MDF, etc.) to attach films to so as to identify any parts that might cause a problem.
 - In the case of MDF, a different density might cause incoherent adhesive strength and printing resistance performance. It is necessary to use MDFs with consistent density.
 - It is necessary to use alcohol to remove pollutants from the surface to be sprayed, and check if there is any damage to the sprayed face due to solvents. If it has an uneven surface, you can apply putty then finish with sandpaper. Use a dust brush to remove foreign substances.
 - In case of steel plates, remove any surface pollutants first with alcohol, lacquer or thinners. For an uneven surface, apply putty, then finish with sandpaper. Use a dust brush to remove foreign substances.

- Do not forget to carry out a prior inspection for any problems (pattern name, appearance, etc.) for products selected by customers.

- Film application should be done after woodwork and before painting or wallpaper hanging.

2. Prior task for Surface

- It is necessary to finishing thoroughly with sandpaper for cross section parts which are to have film applied (MDF etc.).
 - In particular, if the material is wood (MDF, PB, etc.), the smoothness of an edge or crevice is very important. Therefore you should finish the part with sandpaper or with pate treatment before proceeding any further.

3. Primer Treatment

- During primer treatment, a cross section of wood (MDF, PB, etc.) tends to absorb more primer than other parts. Thus, spray at least 2 or 3 coats of primer. Once primer is applied, the next treatment should start when the previous primer has completely dried.

4. How to apply

- Make sure to hide the cross section of the cut-out film as much as possible.
- Try not to show the substrate to be applied with film.
- It is possible there may be some color difference between product lots, so it is necessary to classify lots.
- When surface treated product is overlapped with another product, you should spray undiluted PM04 solution, an exclusive water-type primer for LG Hausys Interior Film then proceed after it has completely dried.
 - In particular, be careful with EI REINA (EL, EP), WOOD (DP, RW, MXA, NE), SOLID (RB, RS) patterns.
 - For outdoor products, you should follow the separate construction standards.
 - In case of WOOD(SW), It should be careful to attach film without damage of surface printing because there is no top film on this product.

5. Things to be aware of when applying specific products

NATURE CRAFT / CLASSIC WOOD

- Requires Butt Joint-style application. Butt overlap application may exfoliate on the overlapping part due to embossing or surface treatment layer.
- It is not available for curved area application as its special multi-layer structure could make exfoliation or surface crease with application of heat on the surface.
- When cutting and applying the product, it is necessary to consider how to connect patterns. If you cut the film by the printed markings on the release paper, it is impossible to match the patterns on different films.

HIGH GLOSS

- To fully achieve gloss effect of the film surface, you should work in a clean environment.
- If there are some foreign substances such as dust and dirt on the substrate to apply film (MDF, etc.) and the film's adhesive side during application, the film surface could be marred or damaged.
- As the product is hard, it is necessary to pay more attention to finishing to ensure no loose edges by applying more strength to obtain visually pleasing finish.

6. Others to note

- If you intend to apply film to a substrate not covered in the specifications regarding application methods and material (MDF, etc.), please contact the LG HAUSYS or the dealer to check application possibility.
- You should follow the guidelines on the specifications to apply films.
- When film is applied, it is necessary to use the exclusive primer for LG Hausys Interior Film.
 - PM02 (Solvent primer), PM04 (Water primer)